



# FLORIDA COURTS **E-FILING AUTHORITY**

## Portal Progress Report September 2022

Carolyn Weber, Portal Program Manager

# September E-Filing Stats

Recipients	Number
Submissions to Trial Court	1,604,283
Submissions to Department of Corrections	504
Submissions to District Courts of Appeal	10,376
Submissions to Florida Supreme Court	367
Submissions to Bureau of Vital Statistics	692
Submissions to RMC, CFRC, SFRC, FWRC, NWFRC**	736
<b>Total E-Filing Submissions**</b>	<b>1,616,958</b>
<b>Total Individual Documents Submitted</b>	<b>2,880,950</b>
<b>Total Number of Pages</b>	<b>14,644,727</b>

\*\*August 2022 had the highest number of monthly submissions to date at 1,979,768

\*\*All Receptions Centers should now be receiving Commitment Packets electronically

# September Stats Continued

Category	Number
Average Submissions per Weekday	85,261
Highest Volume Day: September 12, 2022	95,696
Peak # of Filing in 1 Hour: 3:00 P.M.	9,434
New Case Initiation	89,688
Portal Accounts	491,752
E-service Emails	1,820,716

Record for Average Submissions per Weekday was August 2022 with 88,280

Record for Highest Volume Day was Dec. 2, 2021, at 104,641 Submissions

Record for Peak Filing Hour (3:00 PM) was June 2021 at 10,171 Submissions

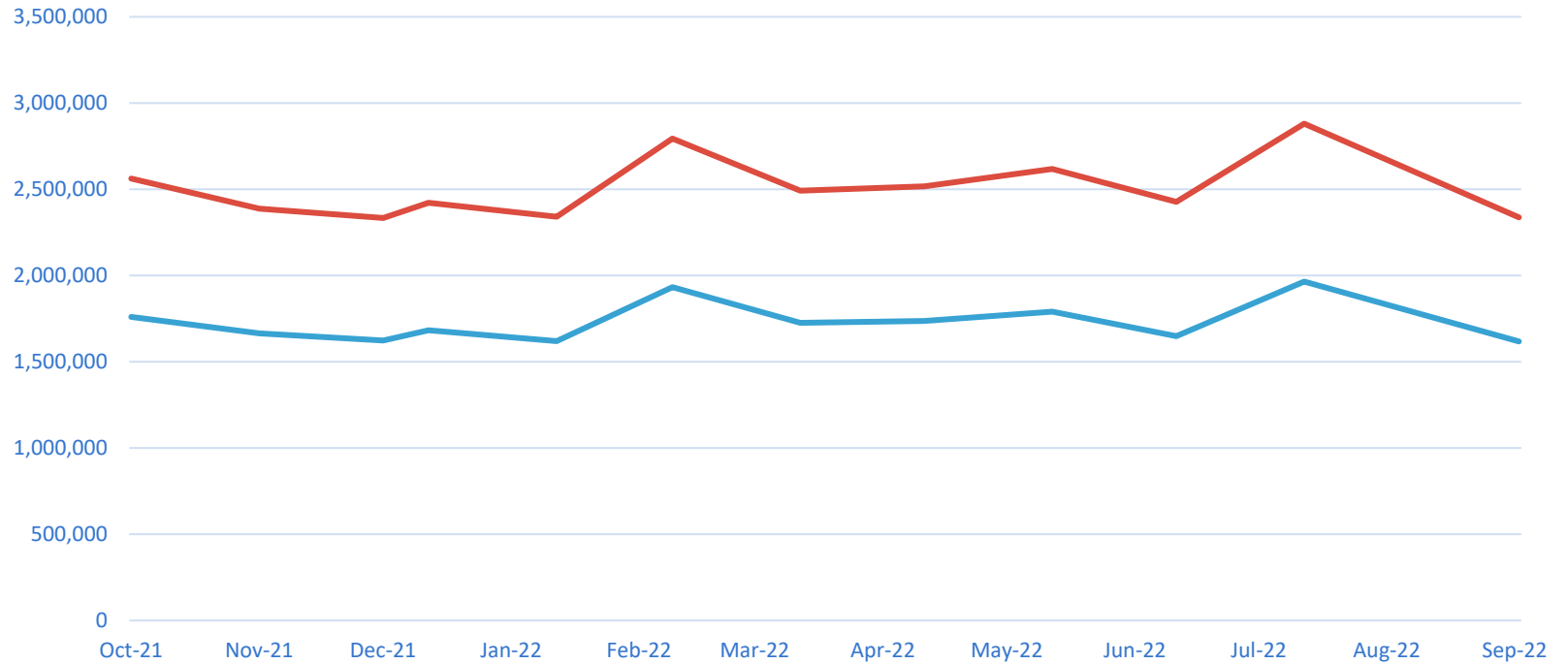
Record for New Case Initiation was May 2021 at 123,476 New Cases Submitted

Record for E-service Emails was August 2022 at 2,138,529 E-service Emails Sent

# DCA & FSC September Stats

District Courts of Appeal	Submissions	Documents	Pages
1 <sup>st</sup> District Court of Appeal	2,151	2,932	133,986
2 <sup>nd</sup> District Court of Appeal	2,383	2,843	175,463
3 <sup>rd</sup> District Court of Appeal	1,586	1,996	147,962
4 <sup>th</sup> District Court of Appeal	2,448	2,837	325,376
5 <sup>th</sup> District Court of Appeal	1,808	2,083	123,355
The Florida Supreme Court	367	492	44,441

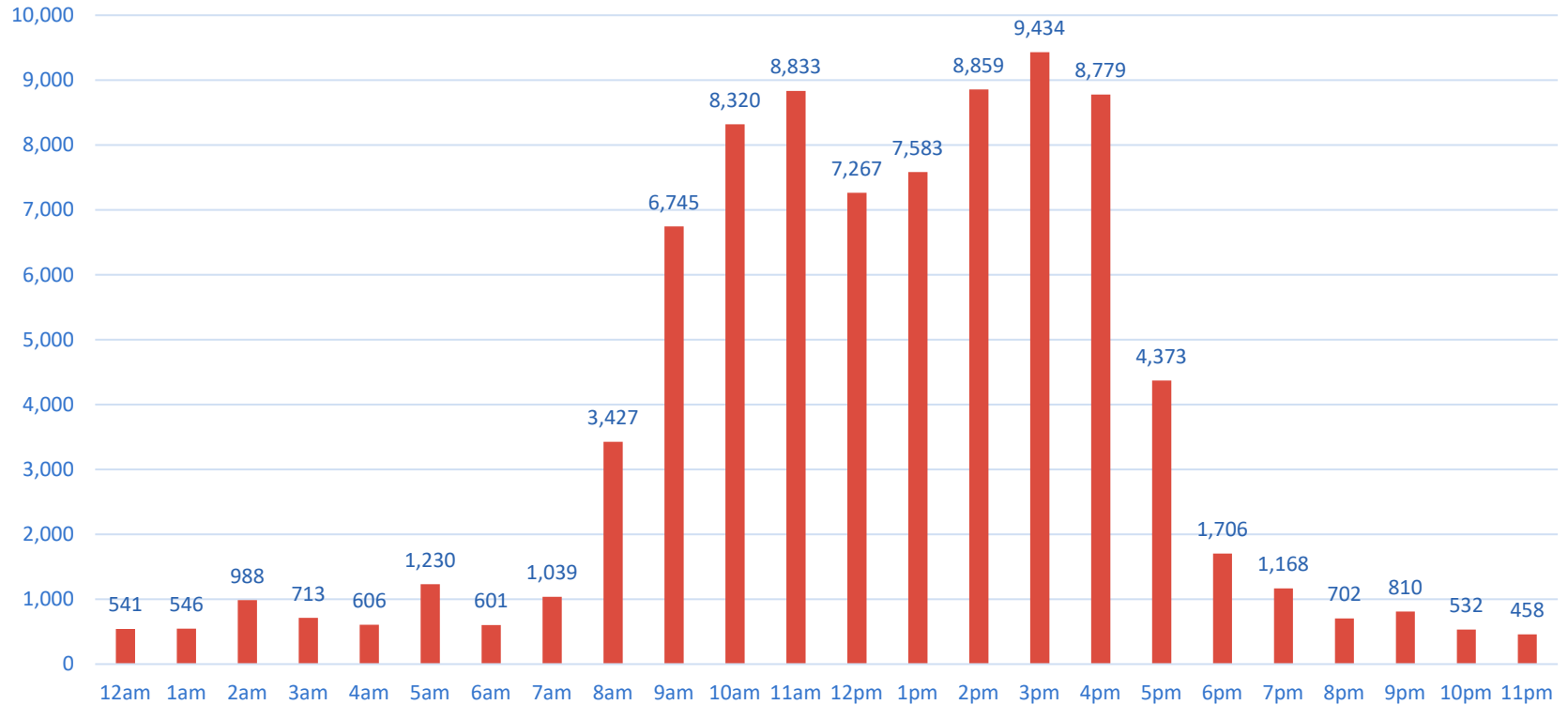
# Year at a Glance



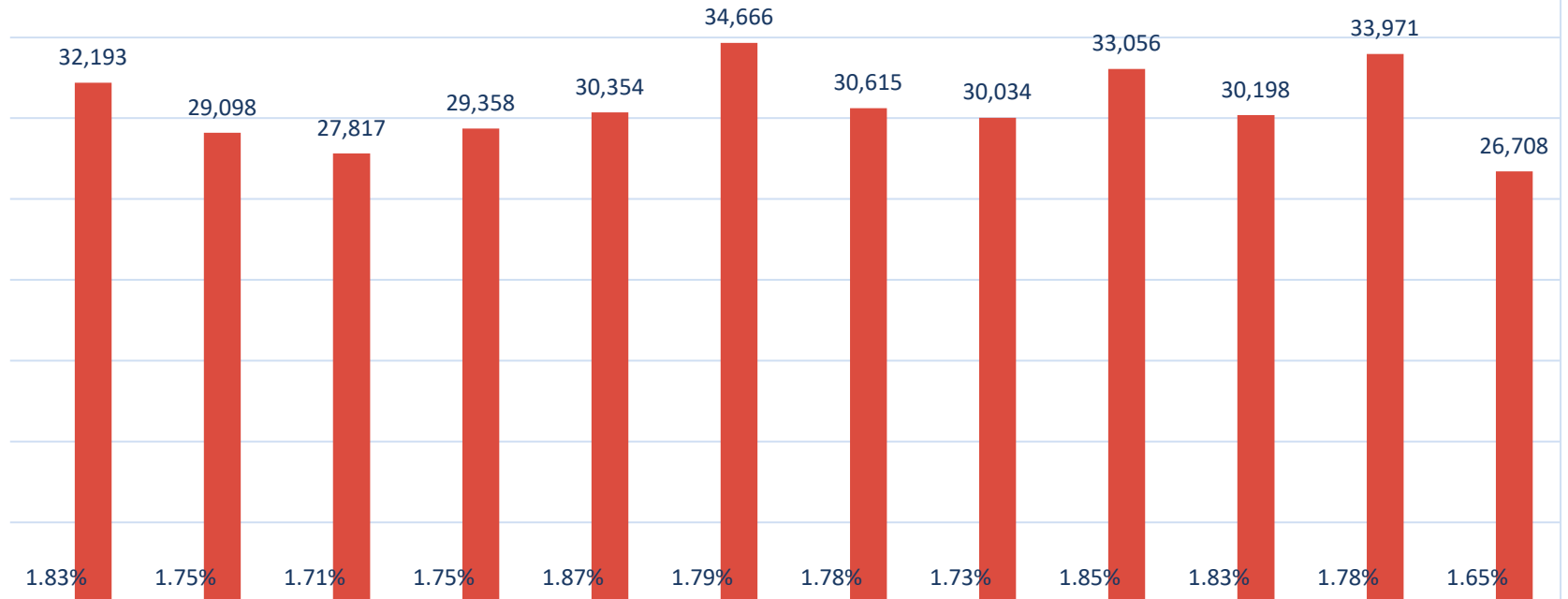
	Oct-21	Nov-21	Dec-21	Jan-22	Feb-22	Mar-22	Apr-22	May-22	Jun-22	Jul-22	Aug-22	Sep-22
Submissions	1,760,013	1,663,646	1,622,135	1,682,004	1,619,938	1,932,622	1,724,679	1,736,521	1,790,707	1,648,344	1,964,622	1,616,958
Documents	2,561,070	2,387,398	2,332,677	2,421,243	2,341,253	2,793,394	2,490,870	2,516,938	2,616,695	2,426,021	2,880,950	2,336,196

— Submissions — Documents

# September Average # of Filings Per Hour

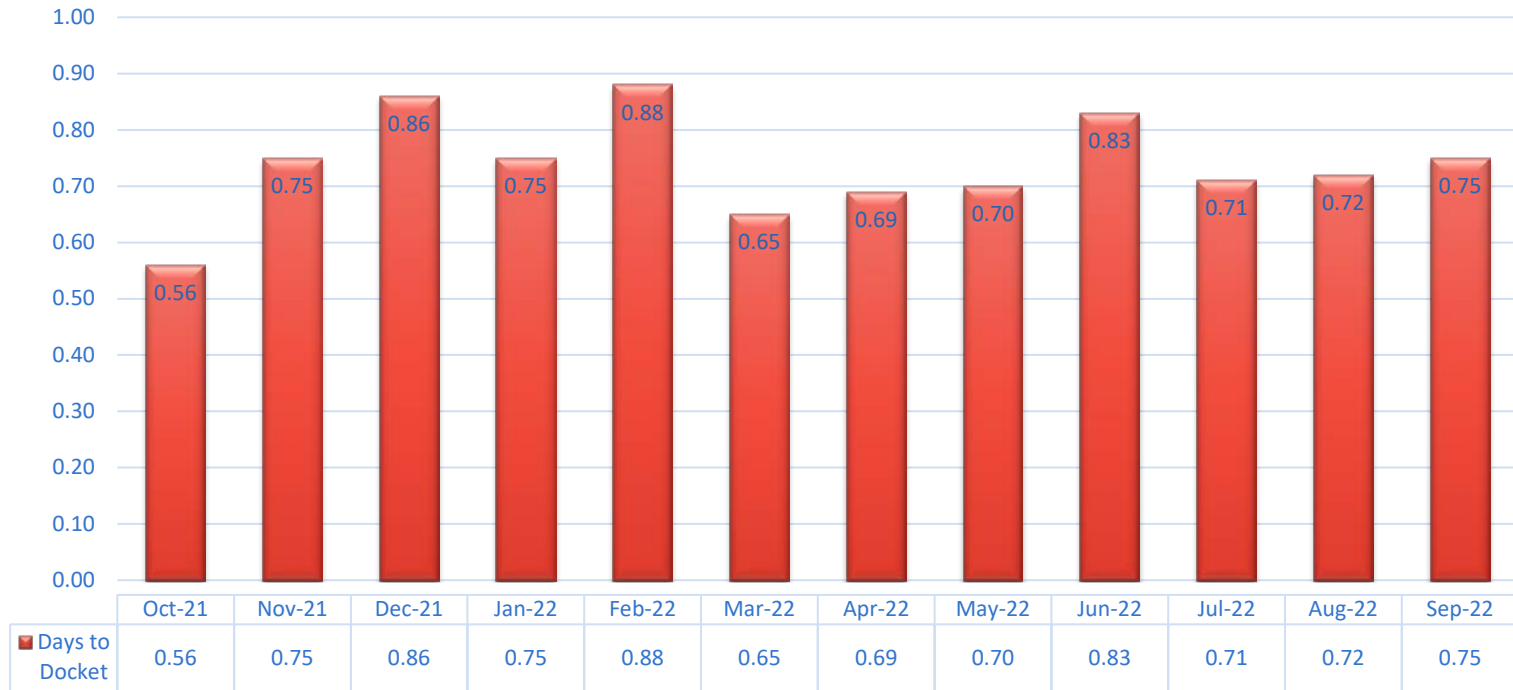


# September Submissions to Correction Queue



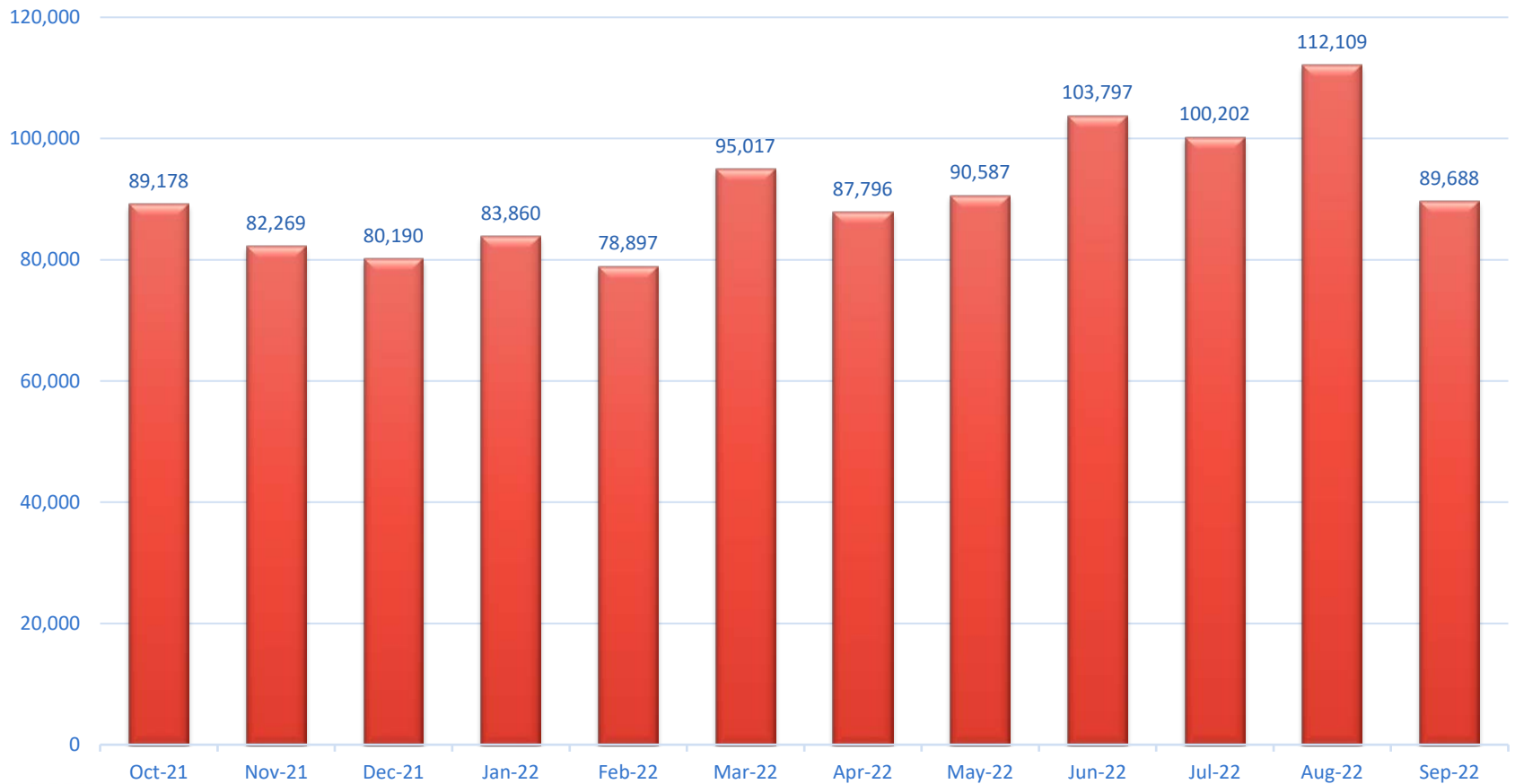
	Oct-21	Nov-21	Dec-21	Jan-22	Feb-22	Mar-22	Apr-22	May-22	Jun-22	Jul-22	Aug-22	Sep-22
■ Percentage	1.83%	1.75%	1.71%	1.75%	1.87%	1.79%	1.78%	1.73%	1.85%	1.83%	1.78%	1.65%
■ Submissions	32,193	29,098	27,817	29,358	30,354	34,666	30,615	30,034	33,056	30,198	33,971	26,708

# September Average Number of Days to Docket





# September Monthly New Case Totals



# September DHSMV Certificates of Completion and DOR Submissions

Detail	Number
Number of Certificates Created and Sent to Counties	18,130
Number of Certificates sent by County to Correction Queue	1,223
Average Percent of Certificates Sent to Correction Queue	6.07%

## Department of Revenue

Detail	Number
Redirect and Termination Documents	5,292 Submissions with 6,211 Documents
Admin Final Order/New Case Initiations	1,603 New Cases with 8,061 Documents

# September Active Portal Users by Filer Role

Filer Role	# of Accts	# of Submissions	% of Submissions
Attorneys	88,949	1,221,670	75.4%
Judicial Circuit Filers	1,671	282,656	17.4%
Process Servers	2,511	27,137	1.7%
Self-Represented Litigants	356,802	13,655	0.8%
Law Enforcement	2,776	17,567	1.1%
Mediator/Arbitrator	1,768	4,449	0.3%
Mental Health Professional	2,120	6,307	0.4%

# September Proposed Documents Submitted via the Portal

Circuit	County	Submissions	Circuit	County	Submissions
1 <sup>st</sup> Mentis	Escambia	1,914	3 <sup>rd</sup> ICMS	Columbia	
	Okaloosa	1,614		Dixie	
	Santa Rosa	1,408		Hamilton	
	Walton	422		Lafayette	
2 <sup>nd</sup> ICMS	Franklin			Madison	
	Gadsden			Suwannee	
	Jefferson			Taylor	
	Leon	291	4 <sup>th</sup> ICMS	Clay (Benchmark)	213
	Liberty			Duval	1,856
Wakulla	65	Nassau		52	

# Proposed Documents Continued

Circuit	County	Submissions
5 <sup>th</sup> ICMS	Citrus	
	Hernando	
	Lake	
	Marion	68
	Sumter	19
6 <sup>th</sup> JAWS	Pasco	
	Pinellas	
7 <sup>th</sup> B'mark	Flagler	
	Putnam	
	St. Johns	
	Volusia	

Circuit	County	Submissions
8 <sup>th</sup> ICMS	Alachua	563
	Baker	90
	Bradford	22
	Gilchrist	8
	Levy	31
	Union	8
9 <sup>th</sup> Mentis	Orange	
	Osceola	
10 <sup>th</sup> ICMS	Hardee	
	Highlands	149
	Polk	796

# Proposed Documents Continued

Circuit	County	Submissions
11 <sup>th</sup> CourtMap	Dade	
12 <sup>th</sup> Mentis	Manatee	327
Benchmark	Sarasota	688
Mentis	DeSoto	
13 <sup>th</sup> JAWS	Hillsborough	13,017
14 <sup>th</sup> ICMS	Bay	2,083
	Calhoun	118
	Gulf	86
	Holmes	195
	Jackson	438
	Washington	226

Circuit	County	Submissions
15 <sup>th</sup> JVS	Palm Beach	921
16 <sup>th</sup> ICMS	Monroe	
17 <sup>th</sup> CMS	Broward	
18 <sup>th</sup> ICMS	Brevard	2,506
	Seminole	3,172
19 <sup>th</sup> Mentis	St. Lucie	
	Indian River	
	Martin	
	Okeechobee	
20 <sup>th</sup> Mentis	Charlotte	1,044
	Collier	1,021

# Proposed Documents Continued

Circuit	County	Submissions
20 <sup>th</sup> Mentis	Glades	8
	Hendry	51
	Lee	5,369

# September Judicial Viewer Submissions

Circuit	Submissions	Documents
1 <sup>st</sup>	16,944	16,944
2 <sup>nd</sup>	1,753	1,753
3 <sup>rd</sup>	319	319
4 <sup>th</sup>	3,339	3,339
5 <sup>th</sup>	2,947	2,947
6 <sup>th</sup>	*	*
7 <sup>th</sup>	1,181	1,181
8 <sup>th</sup>	5,932	5,932
9 <sup>th</sup>	11,775	11,775
10 <sup>th</sup>	4,120	4,120

Circuit	Submissions	Documents
11 <sup>th</sup>	84,126	98,803
12 <sup>th</sup>	2,475	2,475
13 <sup>th</sup>	*	*
14 <sup>th</sup>	6,463	6,463
15 <sup>th</sup>	23,963	24,229
16 <sup>th</sup>	1,221	1,221
17 <sup>th</sup>	33,816	33,816
18 <sup>th</sup>	11,126	11,126
19 <sup>th</sup>	3,692	3,692
20 <sup>th</sup>	21,013	21,013

\*File directly into CMS

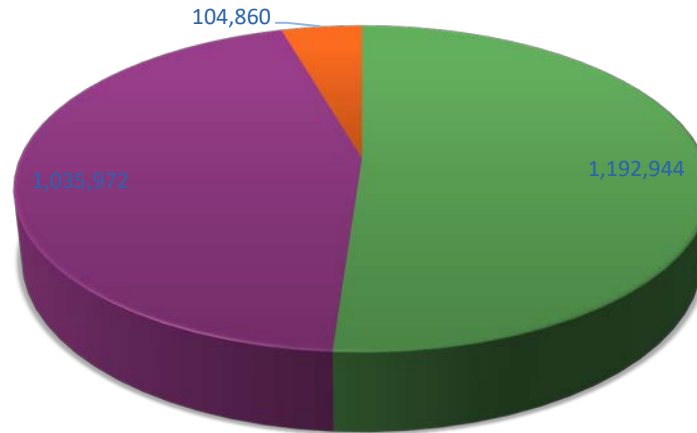


# September Judicial Circuit Single Session Submissions

Circuit	Submissions	Documents
1 <sup>st</sup>	92	127
2 <sup>nd</sup>	4,314	4,555
3 <sup>rd</sup>	2,417	2,578
4 <sup>th</sup>	6,661	7,623
5 <sup>th</sup>	8,800	10,083
6 <sup>th</sup>	178	287
7 <sup>th</sup>	0	0
8 <sup>th</sup>	0	0
9 <sup>th</sup>	6,934	7,136
10 <sup>th</sup>	4,961	5,606

Circuit	Submissions	Documents
11 <sup>th</sup>	1,794	2,005
12 <sup>th</sup>	703	703
13 <sup>th</sup>	0	0
14 <sup>th</sup>	865	927
15 <sup>th</sup>	1	1
16 <sup>th</sup>	0	0
17 <sup>th</sup>	25	32
18 <sup>th</sup>	1,902	2,131
19 <sup>th</sup>	6,864	7,755
20 <sup>th</sup>	304	314

# September Document Format



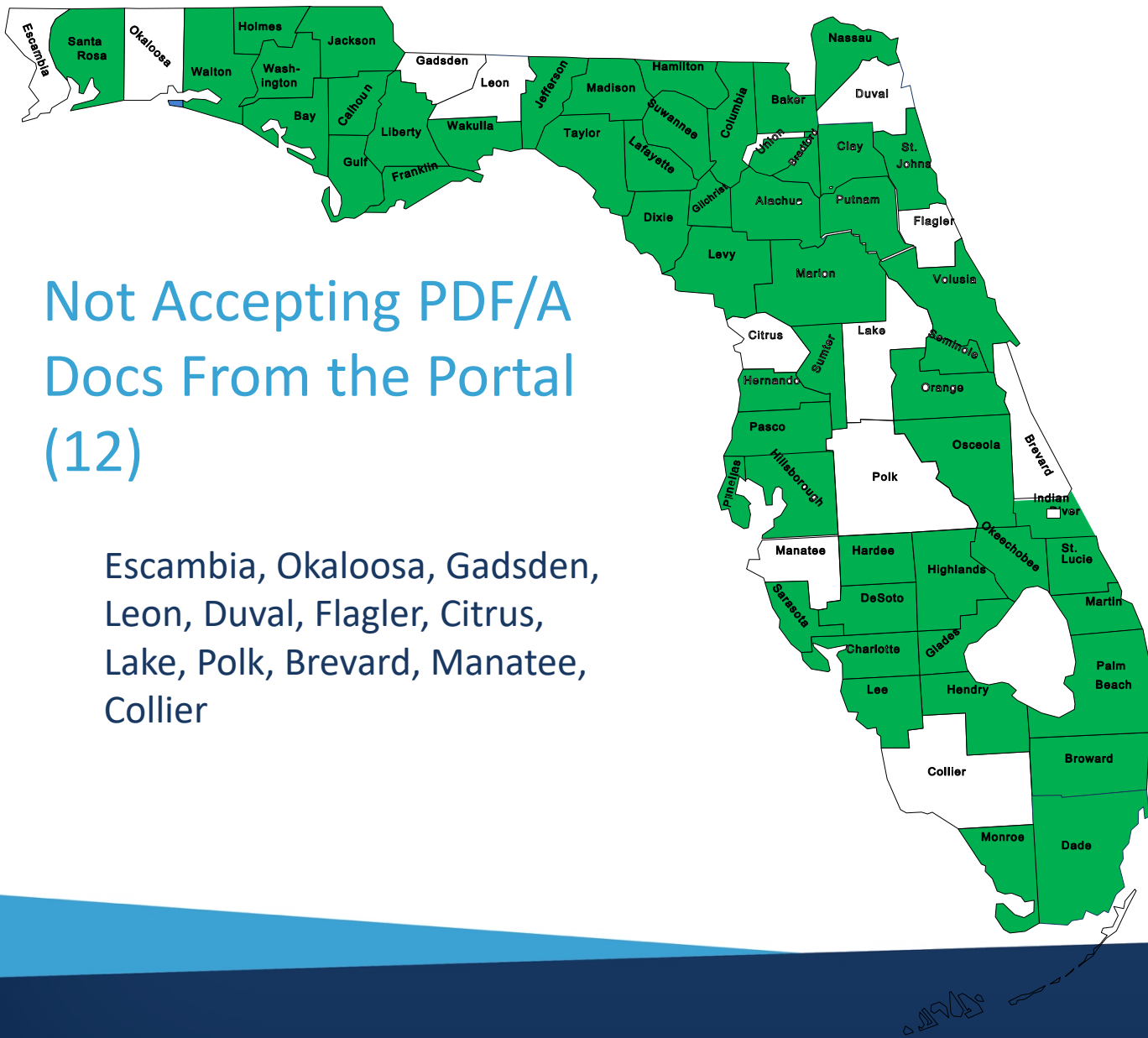
■ Scanned PDF ■ Text Based PDF ■ Word Doc.

Format	Number	Percent
Word	104,860	4%
Text-Based PDF	1,035,972	44%
Scanned PDF	1,192,944	51%

# PDF/A Breakdown

Division	# of Docs	PDF	PDF/A	Other	Searchable	Not Searchable
Civil	1,950,883	1,339,109	531,136	80,638	890,896	979,349
Criminal	369,770	196,179	149,605	23,986	138,733	207,051

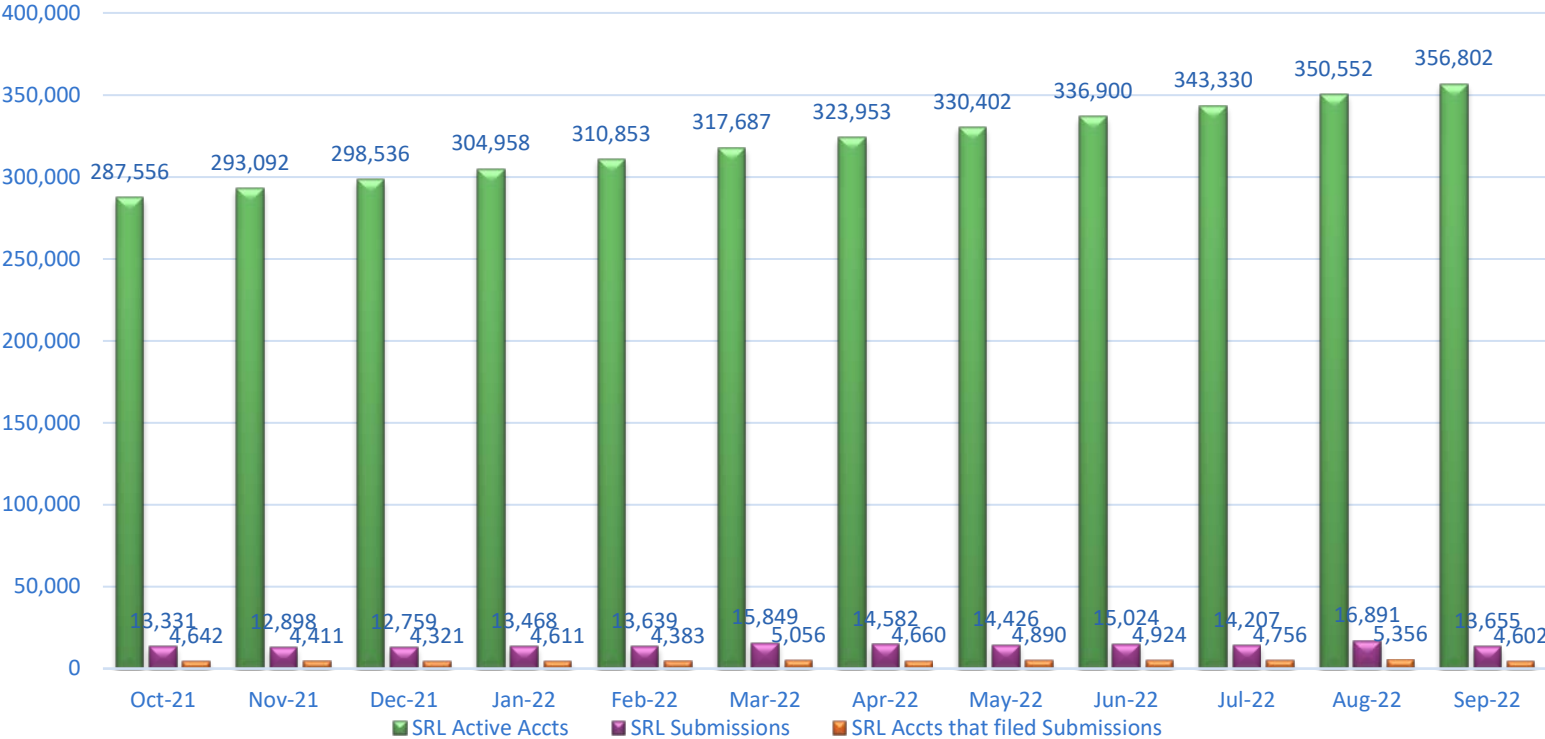
Division	% PDF	% PDF/A	Other	Searchable	Not Searchable
Civil	68.6%	27.2%	4.1%	45.6%	50.2%
Criminal	53.1%	40.5%	6.5%	37.5%	55.9%



## Not Accepting PDF/A Docs From the Portal (12)

Escambia, Okaloosa, Gadsden,  
Leon, Duval, Flagler, Citrus,  
Lake, Polk, Brevard, Manatee,  
Collier

# September Active Self-Represented Litigant Accounts & Submissions



# September SRL Account Status

Accounts	Status
1,974	Inactive (Requested by Portal User)
5,371	Pending Activation
2,019	Locked (After 4 attempts)
356,802	Active

Timeframe of Activity	# of Accounts
Within 0 – 6 Months	55,378
Within 6 – 12 Months	39,893
No Activity 1 – 2 Years	79,012
No Activity for 2 Years or More	177,213

# September SRL Submissions

Jurisdiction	All Submissions	All Documents	New Cases	New Case Docs
Counties	12,985	26,121	1,467	9,350
FSC	74	91	5	7
1 <sup>st</sup> DCA	86	216	5	8
2 <sup>nd</sup> DCA	143	167	0	0
3 <sup>rd</sup> DCA	78	107	10	12
4 <sup>th</sup> DCA	204	235	4	8
5 <sup>th</sup> DCA	85	108	1	2

# September DIY Interviews

Interview	Number
Affidavit of Corroborating Witness	2
Answer	13
Answer to Counterpetition	1
Answer to Petition for Dissolution of Marriage	1
Answer to Supplemental Petition	4
Answer Waiver & Request for Copy of Final Judgment of Dissolution	1
Child Support Guidelines Worksheet	4
Eviction Answer/Filed by Tenants	53
Eviction Complaint/Filed by Landlords	1
Motion to Deviate from Child Support Guidelines	1



# September DIY Interviews

Interview	Number
Notice of Related Cases	2
Notice of Social Security Number	5
Petition for Dissolution of Marriage with Dependent or Minor Child(ren)	1
Petition for Dissolution of Marriage with No Dependent or Minor Child	1
Petition for Injunction for Protection Against Domestic Violence	2
Petition for Injunction for Protection Against Sexual Violence	1
Petition for Simplified Dissolution of Marriage	5
Statements of Claim	1
Uniform Child Custody Jurisdiction and Enforcement Affidavit (UCCJEA)	2

# September TPV Submissions

TPV	# of Submissions	# of Documents
ABC Legal Services, Inc.	27,291	52,463
Azeel	149	394
eFileMadeEasy	103,653	193,066
InfoTrack	179	282
Ironrock	11,627	11,696
JJL Process	117	434
Morgan and Morgan, PA	223	514
Provana	2,698	4,815
TurboCourt	245	1,675