



FLORIDA COURTS  
**E-FILING AUTHORITY**

**Portal Progress Report**  
**October 2022**

Carolyn Weber, Portal Program Manager

# October E-Filing Stats

Recipients	Number
Submissions to Trial Court	1,716,985
Submissions to Department of Corrections	576
Submissions to District Courts of Appeal	11,375
Submissions to Florida Supreme Court	440
Submissions to Bureau of Vital Statistics	774
Submissions to RMC, CFRC, SFRC, FWRC, NWFRC**	901
<b>Total E-Filing Submissions</b>	<b>1,731,051</b>
<b>Total Individual Documents Submitted</b>	<b>2,530,634</b>
<b>Total Number of Pages</b>	<b>12,939,537</b>

August 2022 had the highest number of monthly submissions to date at 1,979,768

\*\*All Receptions Centers are now receiving Commitment Packets electronically\*\*

# October Stats Continued

Category	Number
Average Submissions per Weekday	85,462
Highest Volume Day: October 19, 2022	97,592
Peak # of Filing in 1 Hour: 3:00 P.M.	9,596
New Case Initiation	100,878
Portal Accounts	492,695
E-service Emails	1,905,375

Record for Average Submissions per Weekday was August 2022 with 88,280

Record for Highest Volume Day was Dec. 2, 2021, at 104,641 Submissions

Record for Peak Filing Hour (3:00 PM) was June 2021 at 10,171 Submissions

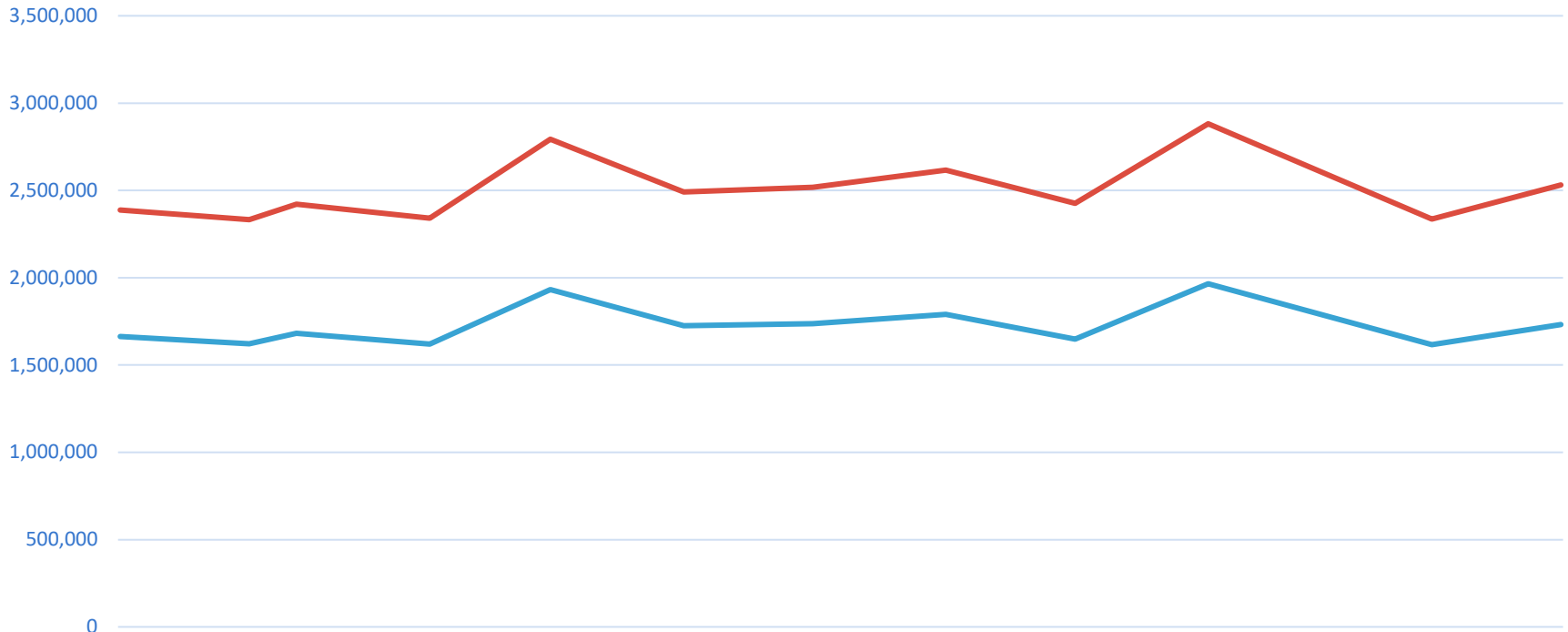
Record for New Case Initiation was May 2021 at 123,476 New Cases Submitted

Record for E-service Emails was August 2022 at 2,138,529 E-service Emails Sent

# DCA & FSC October Stats

District Courts of Appeal	Submissions	Documents	Pages
1 <sup>st</sup> District Court of Appeal	2,210	2,896	146,605
2 <sup>nd</sup> District Court of Appeal	2,841	3,225	246,213
3 <sup>rd</sup> District Court of Appeal	1,662	2,137	163,492
4 <sup>th</sup> District Court of Appeal	2,616	3,039	342,766
5 <sup>th</sup> District Court of Appeal	2,046	2,310	118,921
The Florida Supreme Court	440	593	45,467

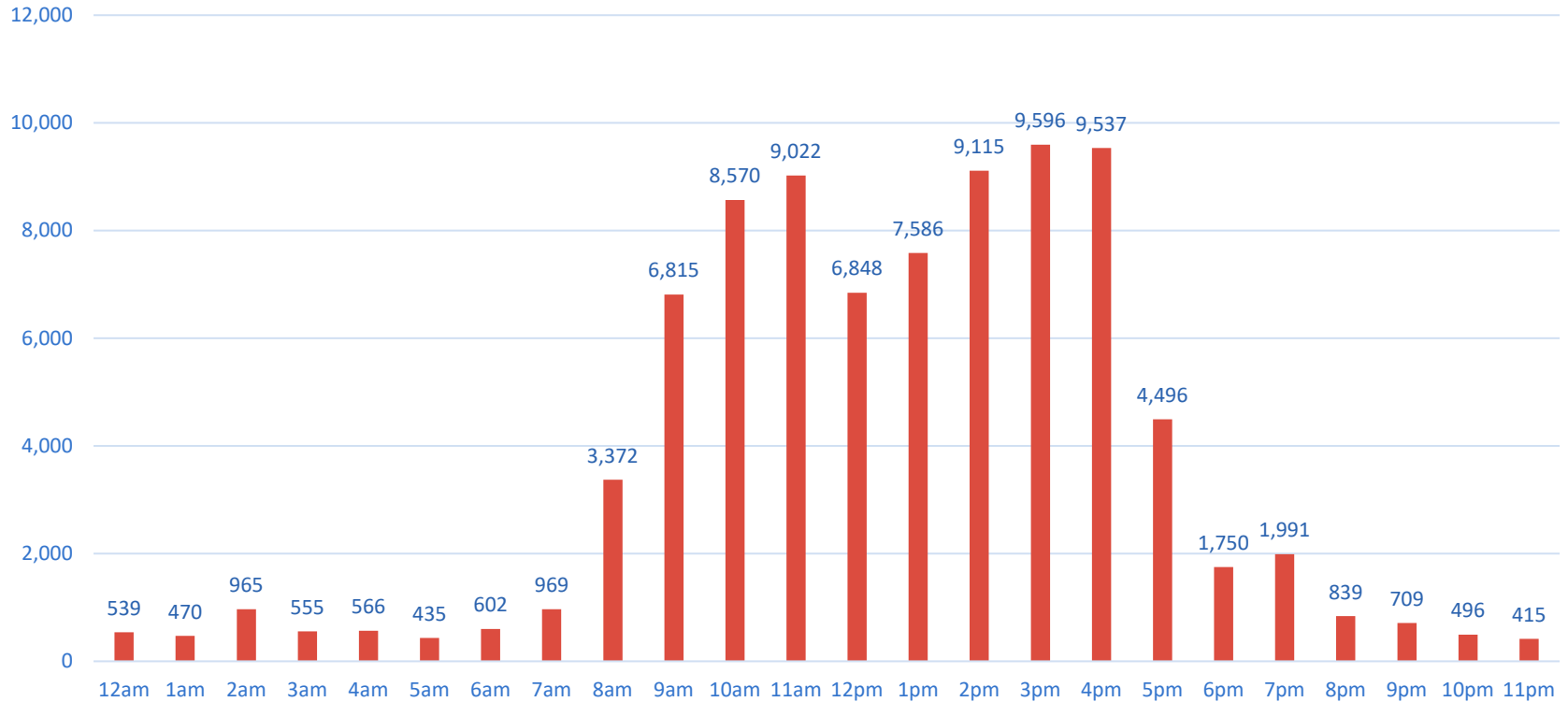
# Year at a Glance



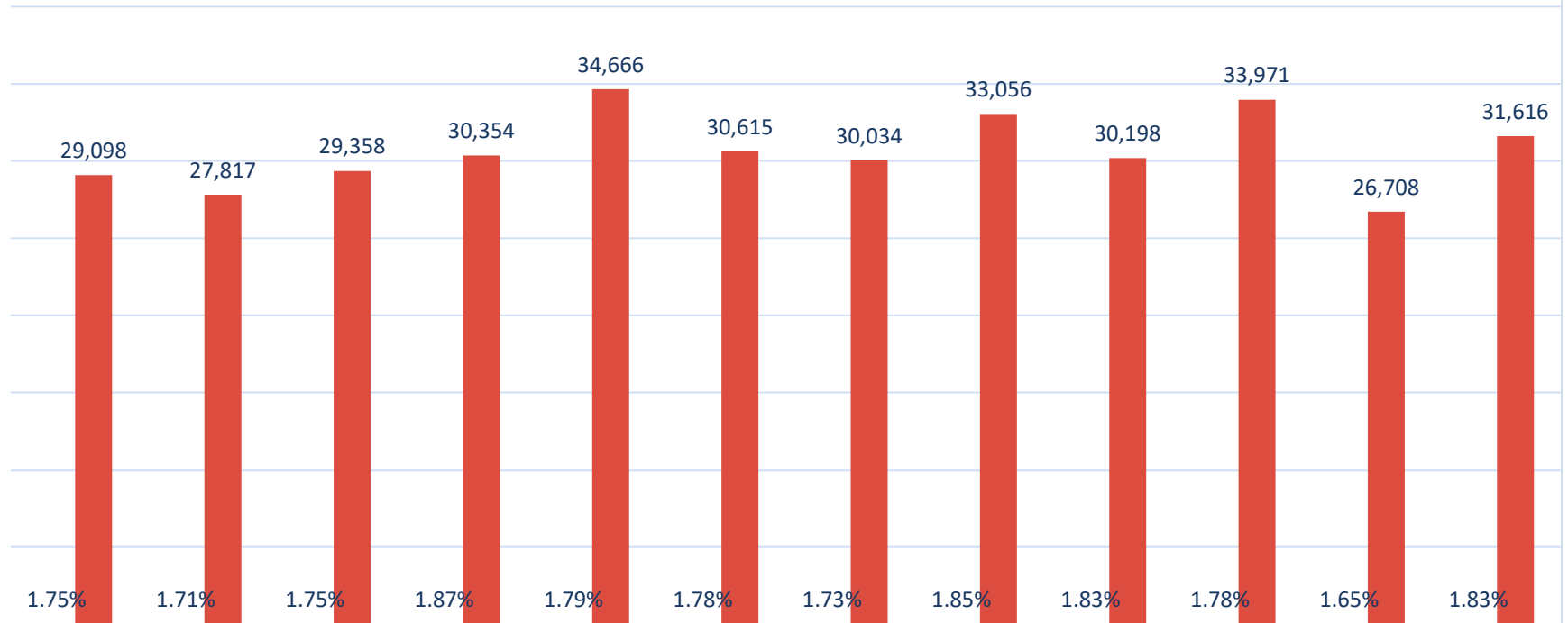
	Nov-21	Dec-21	Jan-22	Feb-22	Mar-22	Apr-22	May-22	Jun-22	Jul-22	Aug-22	Sep-22	Oct-22
Submissions	1,663,646	1,622,135	1,682,004	1,619,938	1,932,622	1,724,679	1,736,521	1,790,707	1,648,344	1,964,622	1,616,958	1,731,051
Documents	2,387,398	2,332,677	2,421,243	2,341,253	2,793,394	2,490,870	2,516,938	2,616,695	2,426,021	2,880,950	2,336,196	2,530,634

— Submissions — Documents

# October Average # of Filings Per Hour

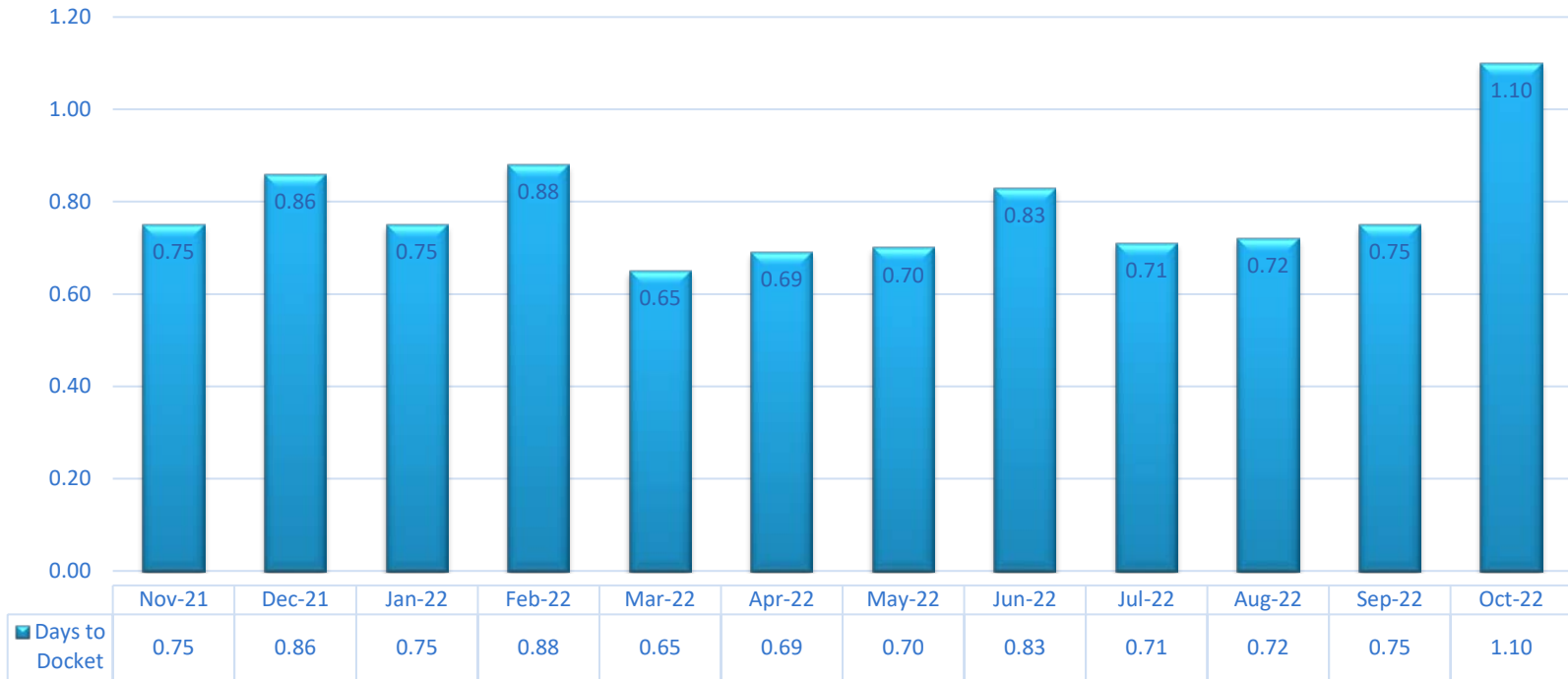


# October Submissions to Correction Queue



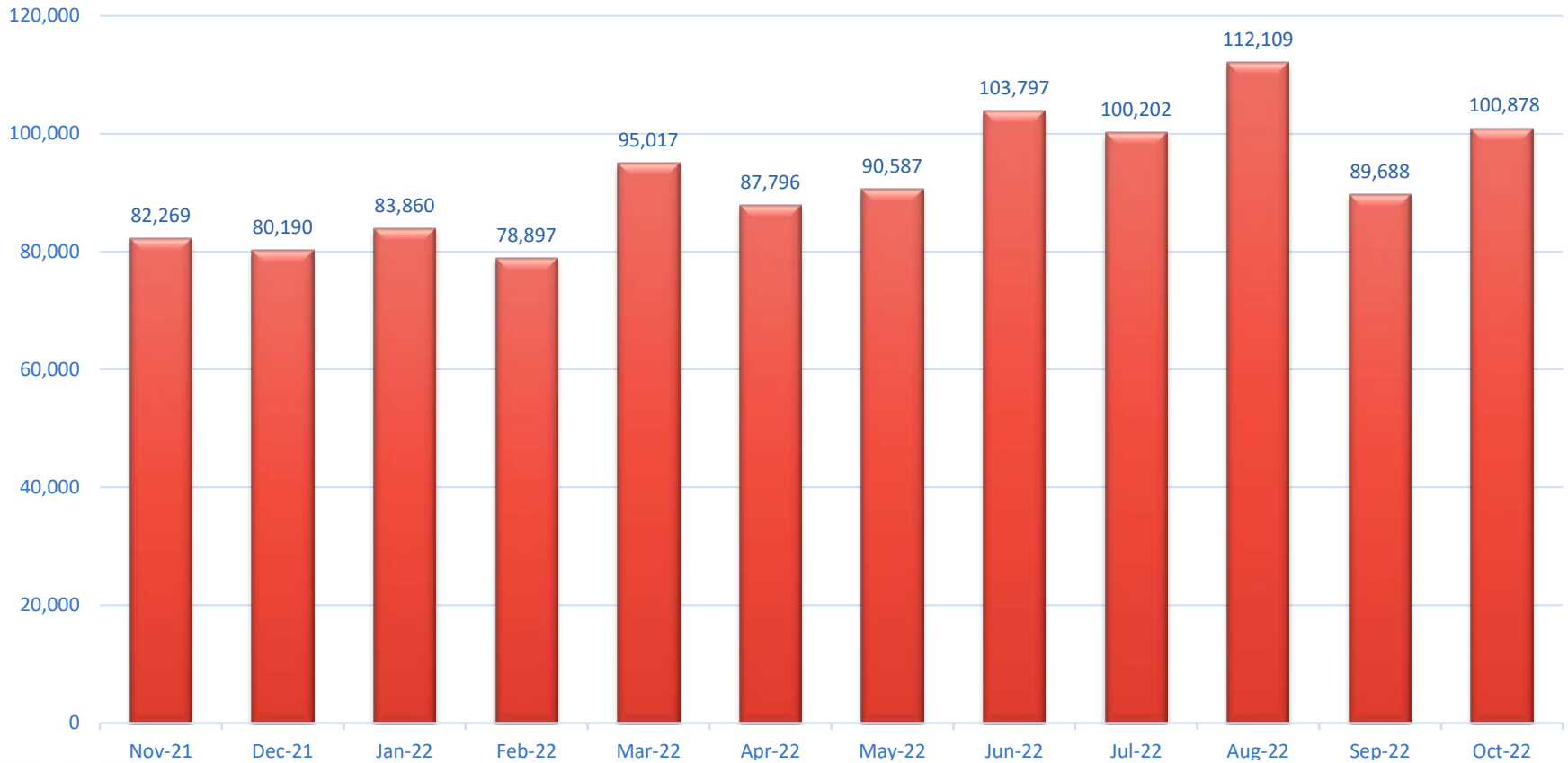
	Nov-21	Dec-21	Jan-22	Feb-22	Mar-22	Apr-22	May-22	Jun-22	Jul-22	Aug-22	Sep-22	Oct-22
■ Percentage	1.75%	1.71%	1.75%	1.87%	1.79%	1.78%	1.73%	1.85%	1.83%	1.78%	1.65%	1.83%
■ Submissions	29,098	27,817	29,358	30,354	34,666	30,615	30,034	33,056	30,198	33,971	26,708	31,616

# October Average Number of Days to Docket





# October Monthly New Case Totals



# October DHSMV Certificates of Completion and DOR Submissions

Detail	Number
Number of Certificates Created and Sent to Counties	17,714
Number of Certificates sent by County to Correction Queue	1,426
Average Percent of Certificates Sent to Correction Queue	7.39%

## Department of Revenue

Detail	Number
Redirect and Termination Documents	5,093 Submissions with 5,874 Documents
Admin Final Order/New Case Initiations	1,773 New Cases with 8,912 Documents

# October Active Portal Users by Filer Role

Filer Role	# of Accts	# of Submissions	% of Submissions
Attorneys	89,380	1,320,708	76.3%
Judicial Circuit Filers	1,681	291,039	16.8%
Process Servers	2,541	26,104	1.5%
Self-Represented Litigants	363,337	15,175	0.9%
Law Enforcement	2,843	19,975	1.2%
Mediator/Arbitrator	1,783	4,872	0.3%
Mental Health Professional	2,147	6,437	0.4%

# October Proposed Documents Submitted via the Portal

Circuit	County	Submissions	Circuit	County	Submissions
1 <sup>st</sup> Mentis	Escambia	1,704	3 <sup>rd</sup> ICMS	Columbia	
	Okaloosa	1,501		Dixie	
	Santa Rosa	1,504		Hamilton	
	Walton	430		Lafayette	
2 <sup>nd</sup> ICMS	Franklin			Madison	
	Gadsden			Suwannee	
	Jefferson			Taylor	
	Leon	320	4 <sup>th</sup> ICMS	Clay (Benchmark)	213
	Liberty			Duval	2,439
Wakulla	56	Nassau		57	

# Proposed Documents Cont.

Circuit	County	Submissions
5 <sup>th</sup> ICMS	Citrus	
	Hernando	
	Lake	
	Marion	84
	Sumter	31
6 <sup>th</sup> JAWS	Pasco	
	Pinellas	
7 <sup>th</sup> B'mark	Flagler	
	Putnam	
	St. Johns	
	Volusia	

Circuit	County	Submissions
8 <sup>th</sup> ICMS	Alachua	570
	Baker	67
	Bradford	22
	Gilchrist	7
	Levy	31
9 <sup>th</sup> Mentis	Union	7
	Orange	
	Osceola	
10 <sup>th</sup> ICMS	Hardee	
	Highlands	135
	Polk	1,082

# Proposed Documents Cont.

Circuit	County	Submissions
11 <sup>th</sup> CourtMap	Dade	
12 <sup>th</sup> Mentis	Manatee	417
Benchmark	Sarasota	757
Mentis	DeSoto	
13 <sup>th</sup> JAWS	Hillsborough	15,160
14 <sup>th</sup> ICMS	Bay	2,179
	Calhoun	130
	Gulf	73
	Holmes	178
	Jackson	419
	Washington	257

Circuit	County	Submissions
15 <sup>th</sup> JVS	Palm Beach	1,075
16 <sup>th</sup> ICMS	Monroe	
17 <sup>th</sup> CMS	Broward	
18 <sup>th</sup> ICMS	Brevard	2,804
	Seminole	3,403
19 <sup>th</sup> Mentis	St. Lucie	
	Indian River	
	Martin	
	Okeechobee	
20 <sup>th</sup> Mentis	Charlotte	835
	Collier	1,197

# Proposed Documents Cont.

Circuit	County	Submissions
20 <sup>th</sup> Mentis	Glades	10
	Hendry	39
	Lee	5,031

# October Judicial Viewer Submissions

Circuit	Submissions	Documents
1 <sup>st</sup>	15,945	15,945
2 <sup>nd</sup>	1,748	1,748
3 <sup>rd</sup>	345	345
4 <sup>th</sup>	4,309	4,309
5 <sup>th</sup>	4,216	4,216
6 <sup>th</sup>	*	*
7 <sup>th</sup>	1,503	1,503
8 <sup>th</sup>	7,019	7,019
9 <sup>th</sup>	16,303	16,303
10 <sup>th</sup>	4,990	4,990

Circuit	Submissions	Documents
11 <sup>th</sup>	67,038	77,277
12 <sup>th</sup>	3,019	3,019
13 <sup>th</sup>	*	*
14 <sup>th</sup>	6,409	6,409
15 <sup>th</sup>	27,472	27,790
16 <sup>th</sup>	1,425	1,425
17 <sup>th</sup>	33,648	33,648
18 <sup>th</sup>	12,785	12,785
19 <sup>th</sup>	3,511	3,511
20 <sup>th</sup>	24,135	24,135

\*File directly into CMS

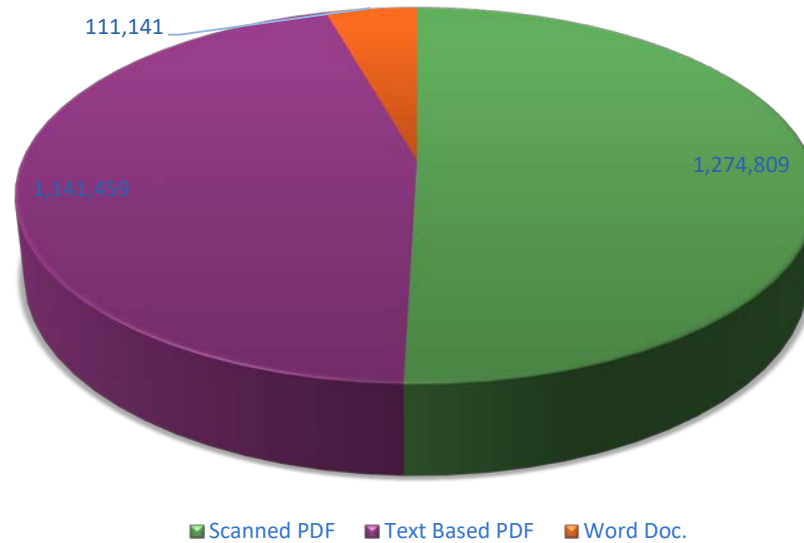


# October Judicial Circuit Single Session Submissions

Circuit	Submissions	Documents
1 <sup>st</sup>	4	4
2 <sup>nd</sup>	4,219	4,410
3 <sup>rd</sup>	2,507	2,717
4 <sup>th</sup>	7,774	8,857
5 <sup>th</sup>	10,316	11,819
6 <sup>th</sup>	178	287
7 <sup>th</sup>	1	1
8 <sup>th</sup>	0	0
9 <sup>th</sup>	8,445	8,737
10 <sup>th</sup>	6,159	7,038

Circuit	Submissions	Documents
11 <sup>th</sup>	1,970	2,174
12 <sup>th</sup>	840	842
13 <sup>th</sup>	0	0
14 <sup>th</sup>	771	839
15 <sup>th</sup>	2	3
16 <sup>th</sup>	0	0
17 <sup>th</sup>	39	39
18 <sup>th</sup>	2,169	2,379
19 <sup>th</sup>	7,875	8,764
20 <sup>th</sup>	375	412

# October Document Format

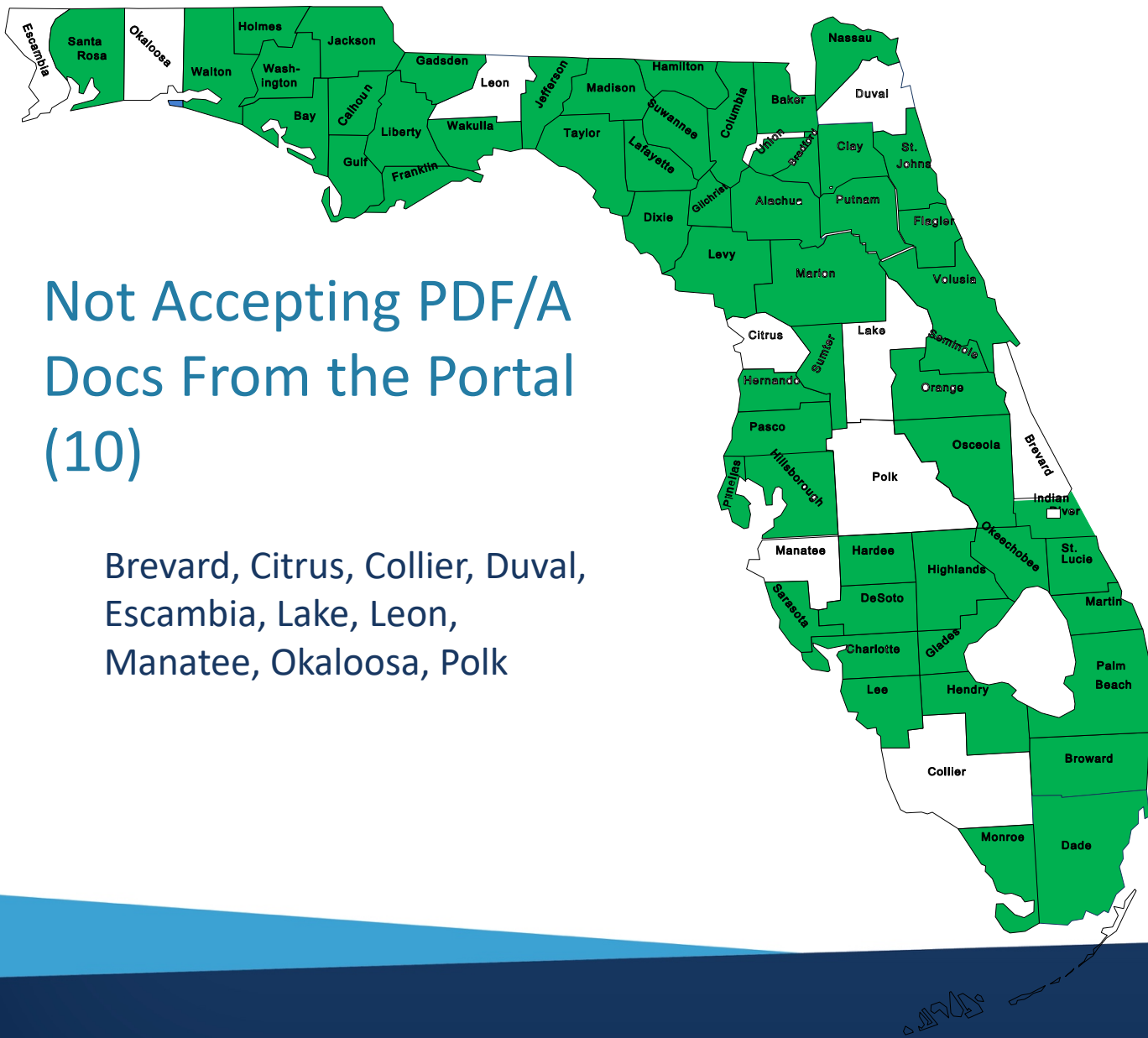


Format	Number	Percent
Word	111,141	4%
Text-Based PDF	1,141,459	45%
Scanned PDF	1,274,809	50%

# PDF/A Breakdown

Division	# of Docs	PDF	PDF/A	Other	Searchable	Not Searchable
Civil	2,078,009	1,394,500	599,836	83,673	968,391	1,025,945
Criminal	435,687	220,588	187,876	27,223	166,210	242,254

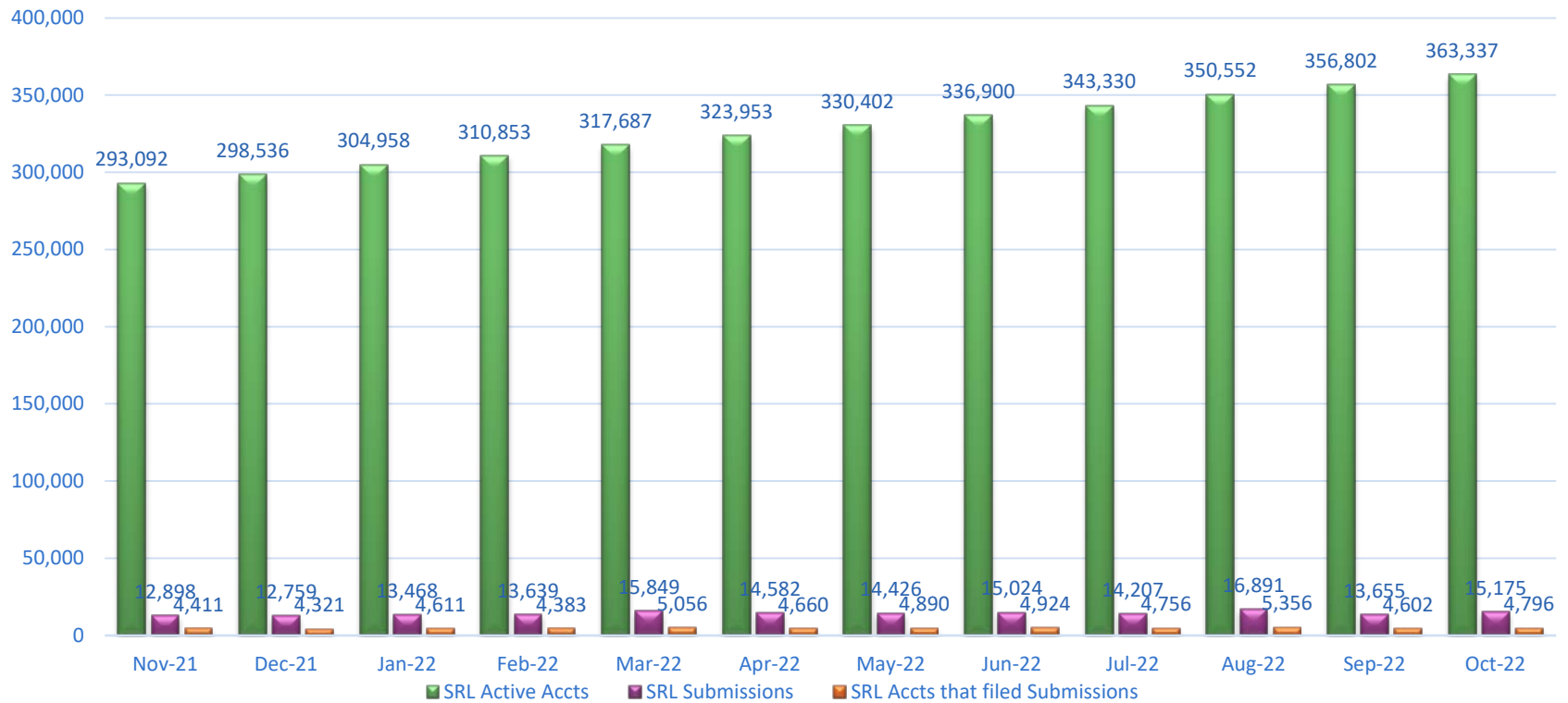
Division	% PDF	% PDF/A	Other	Searchable	Not Searchable
Civil	67.2%	28.9%	4.0%	46.6%	49.4%
Criminal	50.6%	43.1%	6.3%	38.1%	55.6%



# Not Accepting PDF/A Docs From the Portal (10)

Brevard, Citrus, Collier, Duval,  
Escambia, Lake, Leon,  
Manatee, Okaloosa, Polk

# October Active Self-Represented Litigant Accounts & Submissions



# October SRL Account Status

Accounts	Status
1,981	Inactive (Requested by Portal User)
68	Pending Activation
2,046	Locked (After 4 attempts)
363,337	Active

Timeframe of Activity	# of Accounts
Within 0 – 6 Months	55,825
Within 6 – 12 Months	40,082
No Activity 1 – 2 Years	78,559
No Activity for 2 Years or More	183,331

# October SRL Submissions by Jurisdiction

Jurisdiction	All Submissions	All Documents	New Cases	New Case Docs
Counties	14,601	30,204	1,777	11,637
FSC	82	93	9	12
1 <sup>st</sup> DCA	92	130	6	19
2 <sup>nd</sup> DCA	137	160	1	2
3 <sup>rd</sup> DCA	69	80	6	8
4 <sup>th</sup> DCA	123	142	9	15
5 <sup>th</sup> DCA	71	75	0	0

# October DIY Interviews Used

Interview	Number
Answer	18
Answer to Petition for Dissolution of Marriage	1
Answer to Supplemental Petition	4
Child Support Guidelines Worksheet	4
Eviction Answer/Filed by Tenants	66
Eviction Complaint/Filed by Landlords	2
Motion for Temporary Support w/ Dependent or Minor Child(ren)	2
Motion to Deviate from Child Support Guidelines	1
Notice of Related Cases	1
Notice of Social Security Number	10



# October DIY Interviews Used

Interview	Number
Petition for Dissolution of Marriage with Dependent or Minor Child(ren)	1
Petition for Injunction for Protection Against Stalking	2
Petition for Simplified Dissolution of Marriage	8
Statements of Claim	1
Uniform Child Custody Jurisdiction and Enforcement Affidavit (UCCJEA)	5

# October DIY Interviews by County

Interview	Number
Answer	Brevard, Broward, Charlotte, Duval, Hillsborough, Marion, Dade (3), Nassau, Orange (2), Osceola, Palm Beach (3), Polk, Seminole
Answer to Petition for Dissolution of Marriage	Okeechobee
Answer to Supplemental Petition	Bay, Leon, Dade, Orange
Child Support Guidelines Worksheet	Collier, Leon, Dade, Pinellas
Eviction Answer/Filed by Tenants	Brevard, Broward (3), Duval (12), Escambia (2), Hillsborough (6), Lake (2), Lee (2), Marion (2), Dade, Orange (8), Osceola, Palm Beach (10), Pasco (2), Pinellas, Polk, Sarasota, Seminole (8), Sumter, Volusia (2)

# October DIY Interviews by County

Interview	Number
Eviction Complaint/Filed by Landlords	Okaloosa, Volusia
Motion for Temp Support w/ Dep/Minor Child(ren)	Marion, Palm Beach
Motion to Deviate from Child Support Guide	Leon
Notice of Related Cases	Palm Beach
Notice of Social Security Number	Hillsborough (3), Lee, Leon, Palm Beach (5)
Petition for Dissolution of Marriage with Dependent or Minor Child(ren)	Hillsborough
Petition for Injunction for Protection Against Stalking	Marion, Orange
Petition for Simplified Dissolution of Marriage	Brevard (3), Clay, Hernando, Orange, Pasco (2)

# October DIY Interviews by County

Interview	Number
Statement of Claim	Pinellas
Uniform Child Custody Jurisdiction and Enforcement Affidavit (UCCJEA)	Broward, Duval, Leon, Dade, Orange

# October TPV Submissions

TPV	# of Submissions	# of Documents
ABC Legal Services, Inc.	29,710	59,691
Azeel	3,661	3,876
eFileMadeEasy	105,942	220,300
InfoTrack	55	103
Ironrock	12,075	12,191
JJL Process	553	1,757
Morgan and Morgan, PA	515	1,353
Provana	2,615	4,267
TurboCourt	261	1,890