



FLORIDA COURTS **E-FILING AUTHORITY**

Portal Progress Report July 2022

Carolyn Weber, Portal Program Manager

July E-Filing Stats

Recipients	Number
Submissions to Trial Court	1,635,293
Submissions to Department of Corrections	542
Submissions to District Courts of Appeal	10,735
Submissions to Florida Supreme Court	295
Submissions to Bureau of Vital Statistics	789
Submissions to RMC, CFRC, SFRC	690
Total E-Filing Submissions	1,648,344
Total Individual Documents Submitted	2,426,021
Total Number of Pages	12,273,477

**March 2022 had the previous highest number of monthly submissions at 1,932,622

July Stats Continued

Category	Number
Average Submissions per Weekday	84,890
Highest Volume Day: July 26, 2022	92,323
Peak # of Filing in 1 Hour: 3:00 P.M.	9,759
New Case Initiation	100,202
Portal Accounts	475,765
E-service Emails	1,808,857

Record for Average Submissions per Weekday was June 2021 with 88,131

Record for Highest Volume Day was Dec. 2, 2021, at 104,641 Submissions

Record for Peak Filing Hour (3:00 PM) was June 2021 at 10,171 Submissions

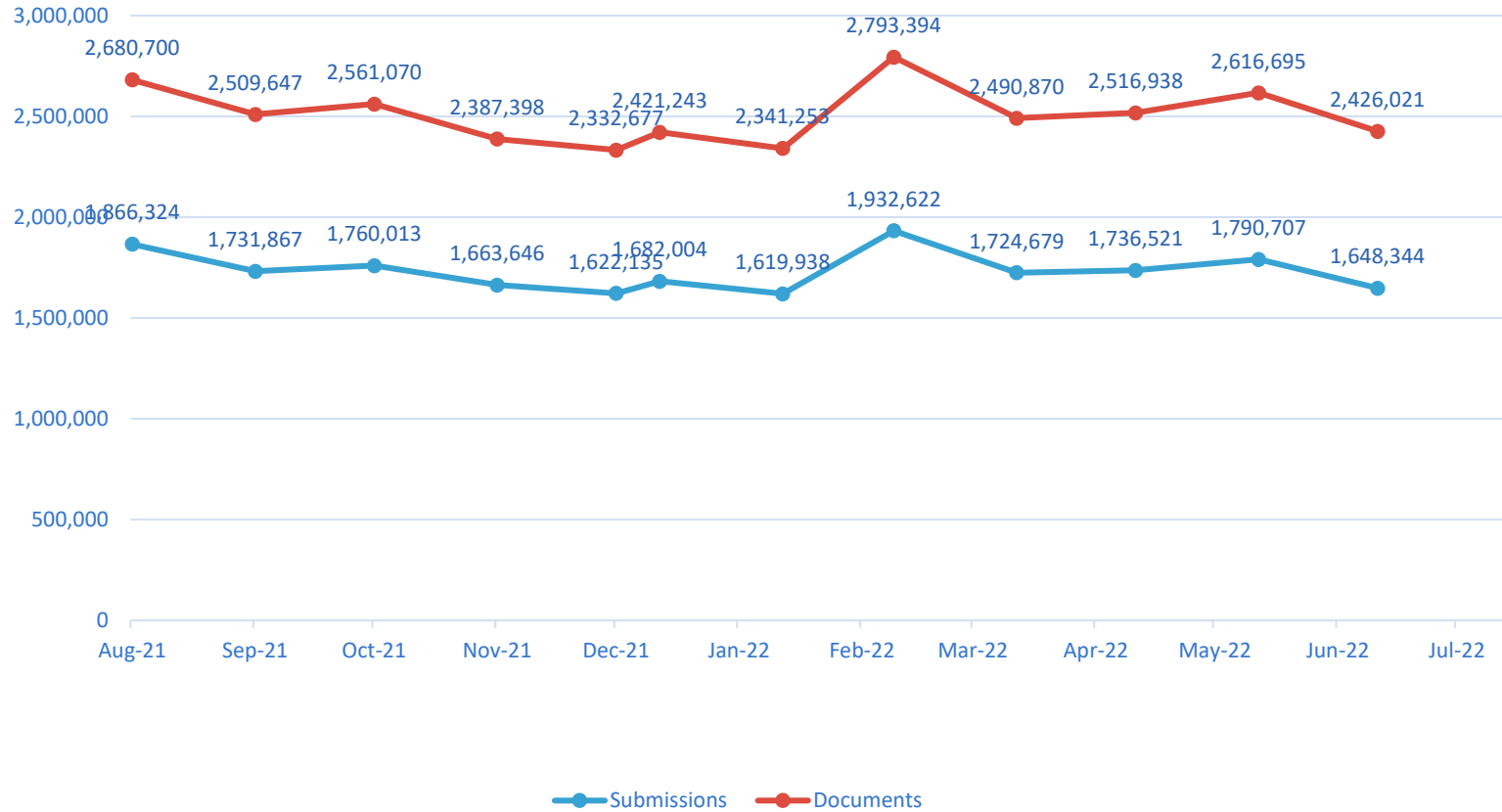
Record for New Case Initiation was May 2021 at 123,476 New Cases Submitted

Record for E-service Emails was June 2021 at 2,047,119 E-service Emails Sent

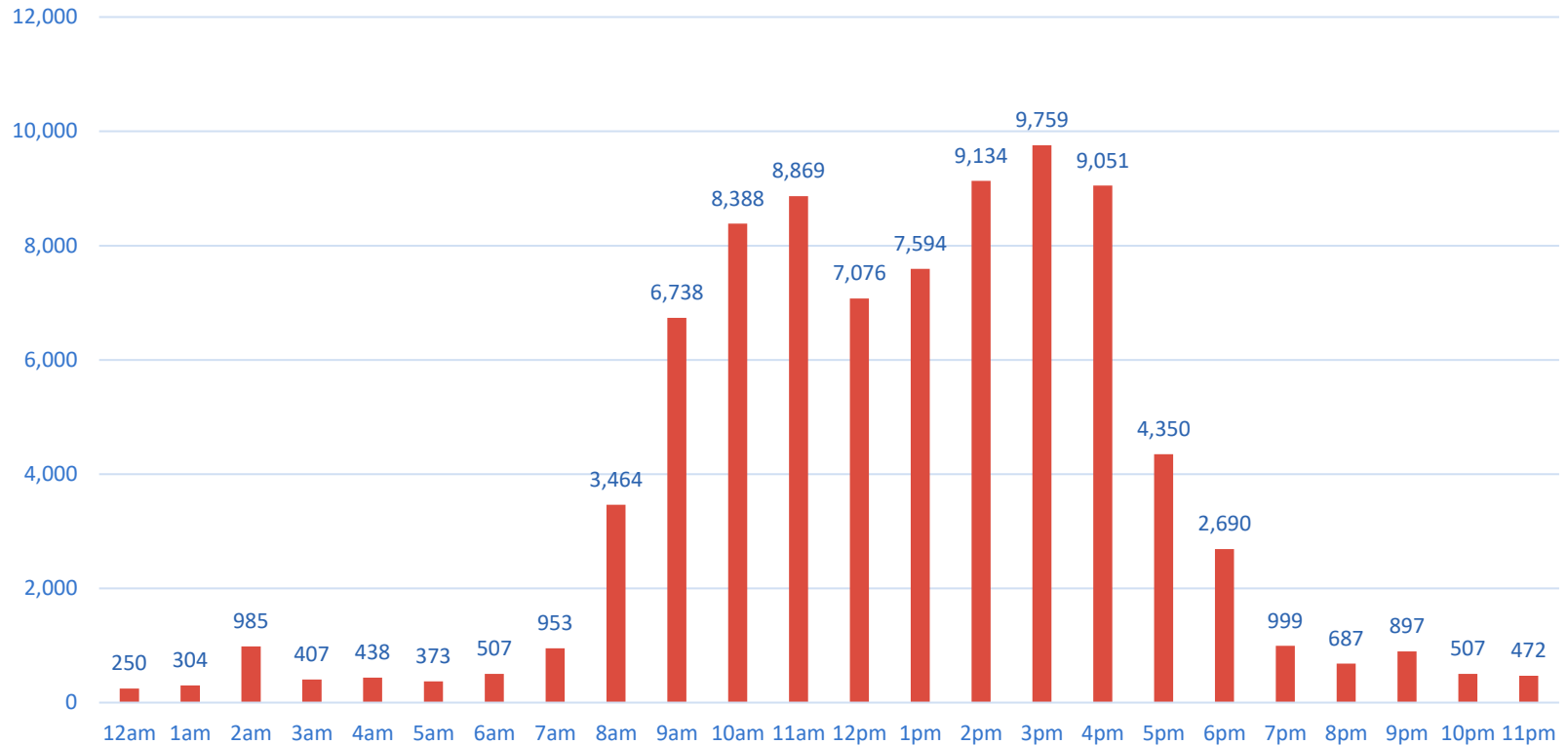
DCA & FSC July Stats

District Courts of Appeal	Submissions	Documents	Pages
1 st District Court of Appeal	2,126	2,749	184,468
2 nd District Court of Appeal	2,630	2,997	203,121
3 rd District Court of Appeal	1,624	2,055	149,159
4 th District Court of Appeal	2,385	2,834	230,791
5 th District Court of Appeal	1,970	2,236	142,139
The Florida Supreme Court	297	378	7,354

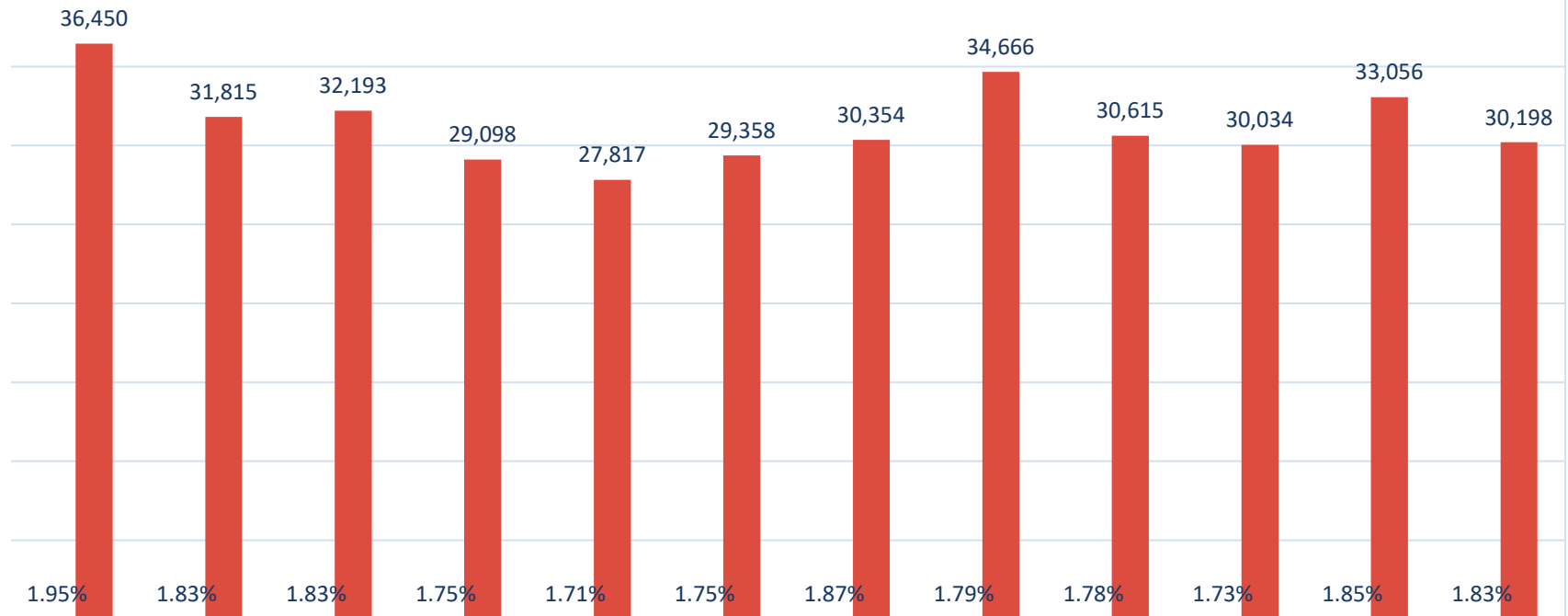
Year at a Glance



July Average # of Filings Per Hour

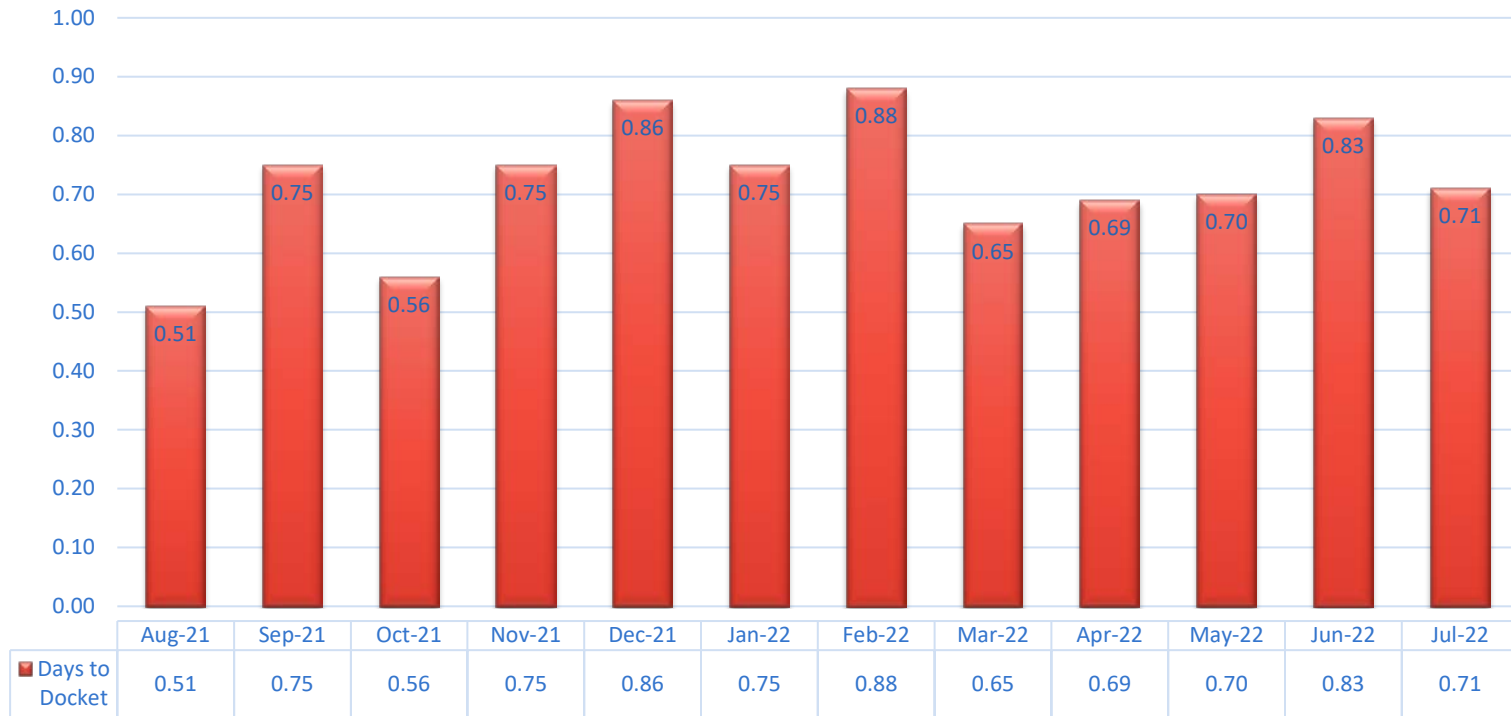


July Submissions to Correction Queue



	Aug-21	Sep-21	Oct-21	Nov-21	Dec-21	Jan-22	Feb-22	Mar-22	Apr-22	May-22	Jun-22	Jul-22
■ Percentage	1.95%	1.83%	1.83%	1.75%	1.71%	1.75%	1.87%	1.79%	1.78%	1.73%	1.85%	1.83%
■ Submissions Returned	36,450	31,815	32,193	29,098	27,817	29,358	30,354	34,666	30,615	30,034	33,056	30,198

July Average Number of Days to Docket



July Monthly New Case Totals



July DHSMV Certificates of Completion and DOR Submissions

Detail	Number
Number of Certificates Created and Sent to Counties	18,912
Number of Certificates sent by County to Correction Queue	1,277
Average Percent of Certificates Sent to Correction Queue	6.60%

Department of Revenue

Detail	Number
Redirect and Termination Documents	5,863 Submissions with 6,769 Documents
Admin Final Order/New Case Initiations	1,428 New Cases with 7,205 Documents

July Active Portal Users by Filer Role

Filer Role	# of Accts	# of Submissions	% of Submissions
Attorneys	95,863	1,260,694	76.5%
Judicial Circuit Filers	2,039	270,796	16.4%
Process Servers	2,548	27,950	1.7%
Self-Represented Litigants	351,797	14,207	0.8%
Law Enforcement	3,532	17,784	1.1%
Mediator/Arbitrator	1,798	4,662	0.3%
Mental Health Professional	2,149	6,691	0.4%

July Proposed Documents Submitted via the Portal

Circuit	County	Submissions	Circuit	County	Submissions
1 st Mentis	Escambia	1,602	3 rd ICMS	Columbia	
	Okaloosa	1,469		Dixie	
	Santa Rosa	1,196		Hamilton	
	Walton	390		Lafayette	
2 nd ICMS	Franklin			Madison	
	Gadsden			Suwannee	
	Jefferson			Taylor	
	Leon	309	4 th ICMS	Clay (Benchmark)	174
	Liberty			Duval	1,550
Wakulla	61	Nassau		34	

Proposed Documents Continued

Circuit	County	Submissions
5 th ICMS	Citrus	
	Hernando	
	Lake	
	Marion	69
	Sumter	24
6 th JAWS	Pasco	
	Pinellas	
7 th B'mark	Flagler	
	Putnam	
	St. Johns	
	Volusia	

Circuit	County	Submissions
8 th ICMS	Alachua	546
	Baker	32
	Bradford	20
	Gilchrist	7
	Levy	35
	Union	7
9 th Mentis	Orange	
	Osceola	
10 th ICMS	Hardee	
	Highlands	148
	Polk	833

Proposed Documents Continued

Circuit	County	Submissions
11 th CourtMap	Dade	
12 th Mentis	Manatee	381
Benchmark	Sarasota	708
	DeSoto	
13 th JAWS	Hillsborough	14,045
14 th ICMS	Bay	2,057
	Calhoun	106
	Gulf	97
	Holmes	169
	Jackson	415
	Washington	260

Circuit	County	Submissions
15 th JVS	Palm Beach	863
16 th ICMS	Monroe	
17 th CMS	Broward	
18 th ICMS	Brevard	2,768
	Seminole	3,191
19 th Mentis	St. Lucie	
	Indian River	
	Martin	
	Okeechobee	
20 th Mentis	Charlotte	970
	Collier	1,137

Proposed Documents Continued

Circuit	County	Submissions
20 th Mentis	Glades	
	Hendry	
	Lee	6,043

July Judicial Circuit Viewer Submissions

Circuit	Submissions	Documents
1 st	14,518	14,518
2 nd	1,598	1,598
3 rd	350	350
4 th	5,025	5,025
5 th	3,081	3,081
6 th	*	*
7 th	1,296	1,296
8 th	6,134	6,134
9 th	12,829	12,829
10 th	4,430	4,430

Circuit	Submissions	Documents
11 th	53,259	65,522
12 th	3,112	3,112
13 th	*	*
14 th	5,729	5,729
15 th	36,170	36,366
16 th	1,412	1,412
17 th	31,884	31,884
18 th	11,306	11,306
19 th	3,119	3,119
20 th	23,964	23,964

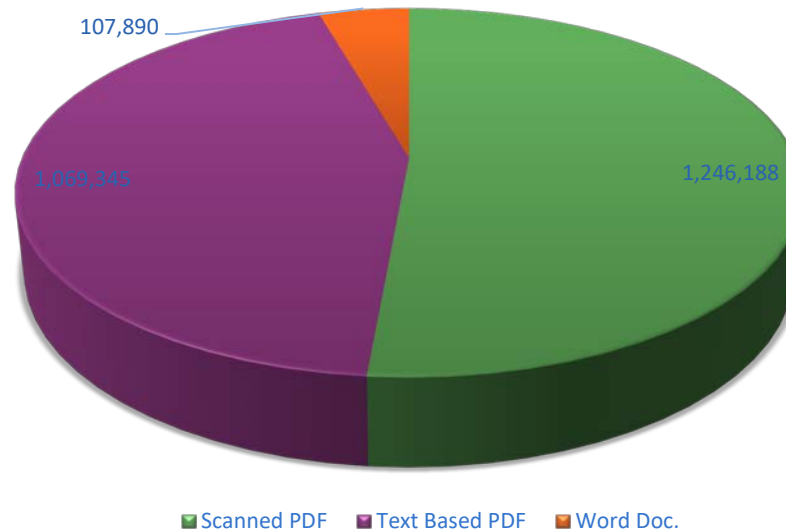
*File directly into CMS

July Judicial Circuit Single Session Submissions

Circuit	Submissions	Documents
1 st	0	0
2 nd	3,824	4,059
3 rd	2,178	2,400
4 th	7,072	8,257
5 th	10,095	11,616
6 th	0	0
7 th	0	0
8 th	0	0
9 th	7,794	8,063
10 th	5,617	6,585

Circuit	Submissions	Documents
11 th	1,948	2,189
12 th	697	700
13 th	0	0
14 th	674	737
15 th	1	2
16 th	0	0
17 th	14	14
18 th	2,073	2,298
19 th	7,203	7,999
20 th	436	450

July Document Format



Format	Number	Percent
Word	107,890	4%
Text-Based PDF	1,069,345	44%
Scanned PDF	1,246,188	51%

PDF/A Breakdown

Division	# of Docs	PDF	PDF/A	Other	Searchable	Not Searchable
Civil	2,005,962	1,382,288	542,499	81,175	906,812	1,017,975
Criminal	404,371	209,103	168,798	26,470	156,006	221,895

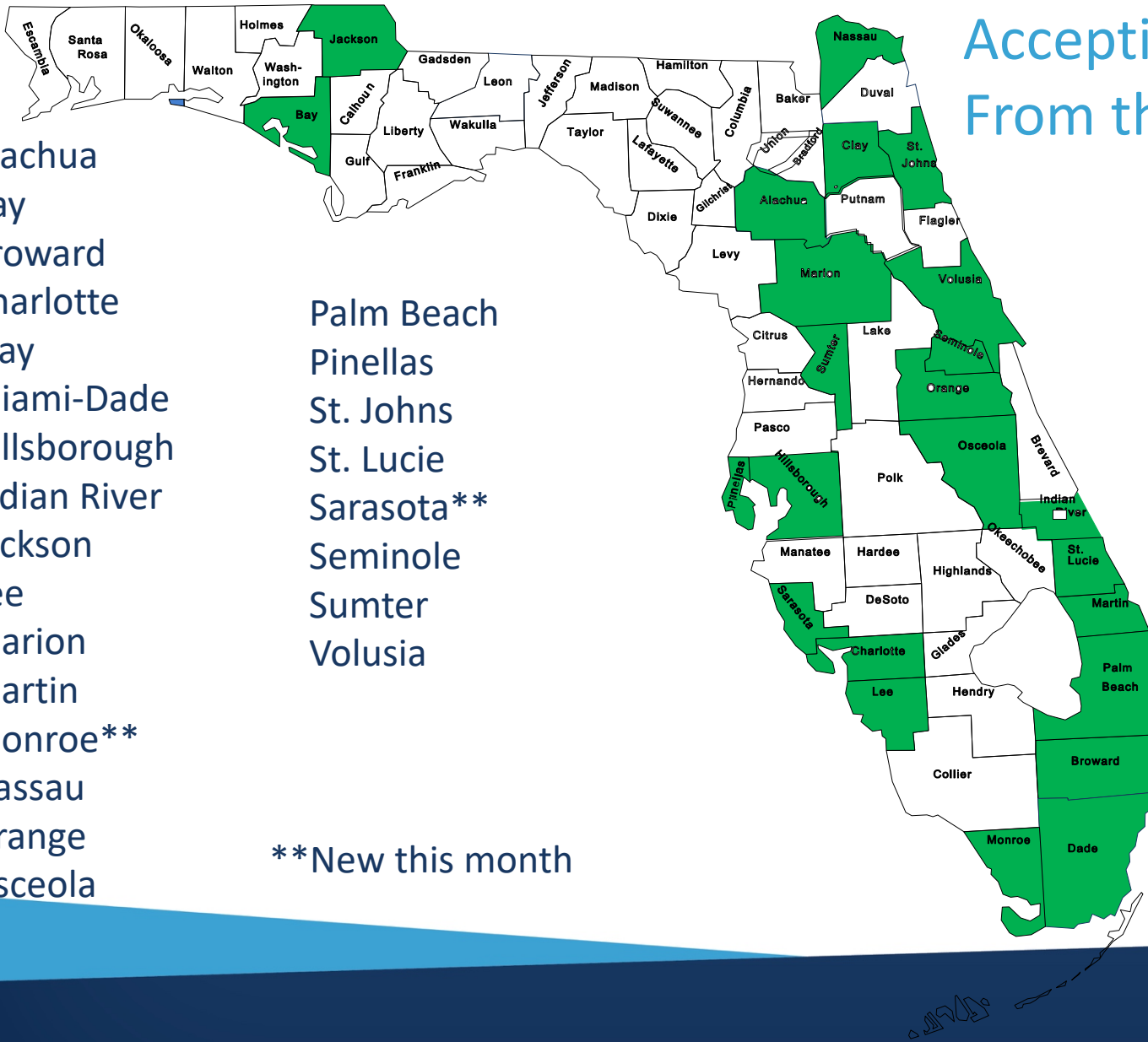
Division	% PDF	% PDF/A	Other	Searchable	Not Searchable
Civil	68.9%	27%	4.1%	45.2%	50.7%
Criminal	51.7%	41.7%	6.5%	38.6%	54.9%

Accepting PDF/A Docs From the Portal (24)

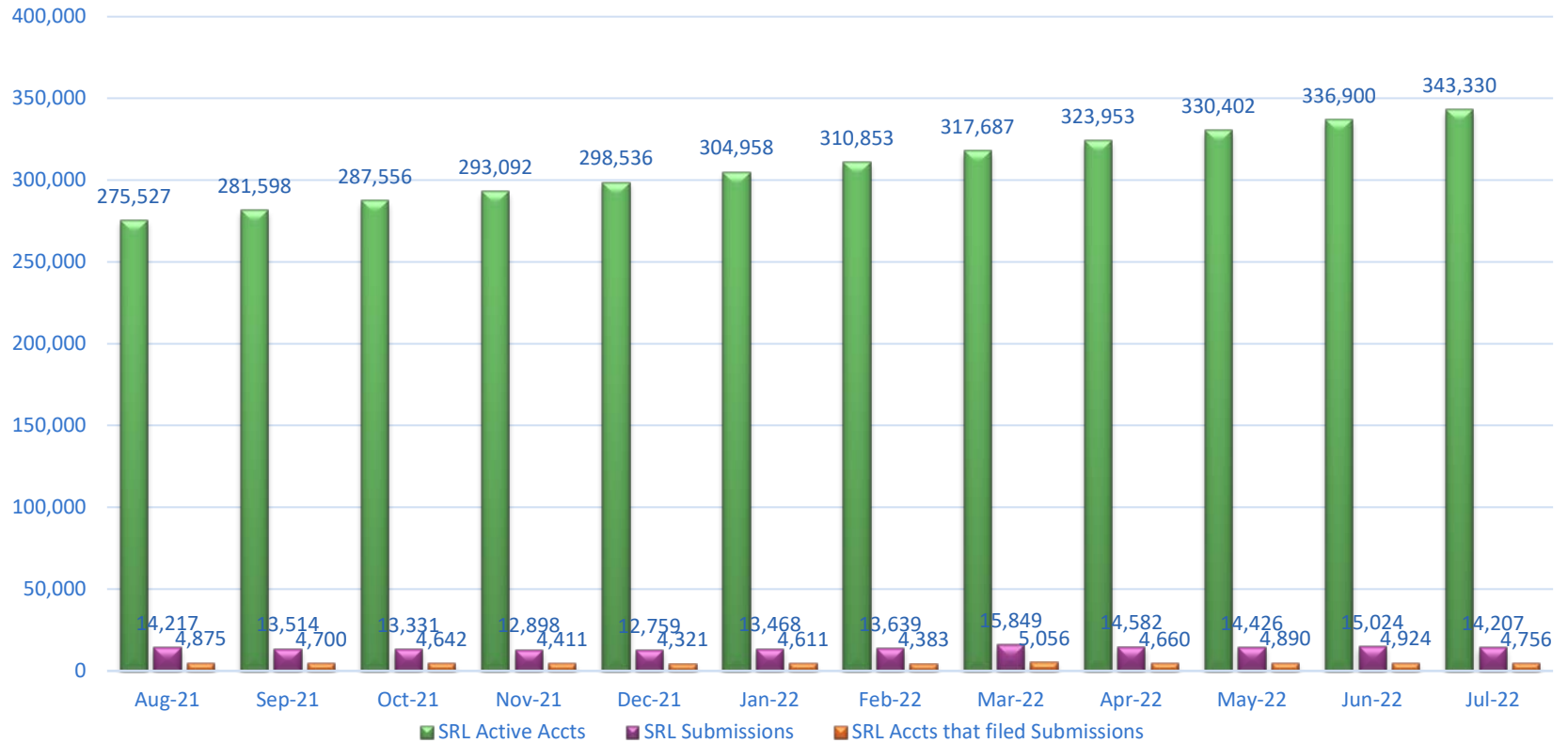
Alachua
Bay
Broward
Charlotte
Clay
Miami-Dade
Hillsborough
Indian River
Jackson
Lee
Marion
Martin
Monroe**
Nassau
Orange
Osceola

Palm Beach
Pinellas
St. Johns
St. Lucie
Sarasota**
Seminole
Sumter
Volusia

**New this month



July Active Self-Represented Litigant Accounts & Submissions



July SRL Account Status

Accounts	Status
1,955	Inactive (Requested by Portal User)
4,547	Pending Activation
1,944	Locked (After 4 attempts)
343,330	Active

Timeframe of Activity	# of Accounts
Within 0 – 6 Months	54,392
Within 6 – 12 Months	40,126
No Activity 1 – 2 Years	79,524
No Activity for 2 Years or More	164,183

July SRL Submissions

Jurisdiction	All Submissions	All Documents	New Cases	New Case Docs
Counties	13,614	29,417	1,624	11,150
FSC	29	58	4	15
1 st DCA	86	109	4	12
2 nd DCA	163	186	5	10
3 rd DCA	84	110	10	21
4 th DCA	169	192	9	17
5 th DCA	62	68	0	0

July DIY Interviews

Interview	New Case/Sub. Filing	Number
Answer – Small Claims	Subsequent Filing	20
Answer to Counterpetition	Subsequent Filing	5
Answer to Petition for Dissolution of Marriage	Subsequent Filing	3
Answer to Supplemental Petition	Subsequent Filing	1
Child Support Guidelines Worksheet	Subsequent Filing	2
Eviction Answer/Filed by Tenants	Subsequent Filing	69
Eviction Complaint/Filed by Landlords	New Case	2
Motion for Modification of Injunction	Subsequent Filing	1
Motion for Temporary Support with Dependent or Minor Child(ren)	Subsequent Filing	3
Notice of Social Security Number	Subsequent Filing	1

July DIY Interviews

Interview	New Case/Sub. Filing	Number
Petition for Dissolution of Marriage with Dependent or Minor Child(ren)	New Case	1
Petition for Simplified Dissolution of Marriage	New Case	4
Statements of Claim	New Case	1
Uniform Child Custody Jurisdiction and Enforcement Affidavit (UCCJEA)	Subsequent Filing	2

July DIY Interviews

Interview	County
Answer – Small Claims	Brevard, Broward, Duval (3), Hillsborough (2), Lee (2), Leon, Dade (2), Osceola, Palm Beach (3), Pasco (2), Polk, St. Johns
Answer to Counterpetition	Duval, Leon, Santa Rosa (3)
Answer to Petition for Dissolution of Marriage	Broward, Dade, Hernando
Answer to Supplemental Petition	Citrus
Child Support Guidelines Worksheet	Duval, St. Johns
Eviction Answer/Filed by Tenants	Brevard, Broward (3), Dade (4), Duval (8), Escambia (2), Hillsborough (2), Lake, Lee, Manatee, Okaloosa, Orange (19), Osceola (3), Palm Beach (6), Pinellas (5), Seminole (7), St. Lucie (2), Volusia (3)

July DIY Interviews

Interview	County
Eviction Complaint/Filed by Landlords	Levy, Volusia
Motion for Modification of Injunction for Protection	Palm Beach
Motion for Temporary Support with Dependent or Minor Child(ren)	Pasco, St. Johns, St. Lucie
Notice of Social Security Number	Hillsborough
Petition for Dissolution of Marriage w/Dependent or Minor Child(ren)	Duval
Petition for Simplified Dissolution of Marriage	Alachua, Indian River, Palm Beach (2)
Statements of Claim	Pasco
Uniform Child Custody Jurisdiction and Enforcement Affidavit (UCCJEA)	Leon, Volusia

July TPV Submissions

TPV	# of Submissions	# of Documents	%
ABC Legal Services, Inc.	27,708	52,459	21%
Azeel	379	979	0%
eFileMadeEasy	89,010	182,139	68%
InfoTrack	100	187	0%
Ironrock	11,306	11,354	9%
JJL Process	517	1,835	0%
Provana	2,002	3,568	2%
TurboCourt	311	2,013	0%