



Florida Courts E-Filing Authority Board

Portal Progress Report December 2021

Carolyn Weber, Portal Program Manager



December E-Filing Stats

Recipients	Number
Submissions to Trial Court	1,609,892
Submissions to Department of Corrections	505
Submissions to District Courts of Appeal	10,446
Submissions to Florida Supreme Court	351
Submissions to Bureau of Vital Statistics	722
Submissions to RMC and CFRC	219
Total E-Filing Submissions	1,622,135
Total Individual Documents Submitted	2,332,677
Total Number of Pages	11,394,139

**June 2021 had the highest number of monthly submissions 1,893,314



December Stats Continued

Category	Number
Average Submissions per Weekday	77,795
Highest Volume Day: December 2, 2021**	104,641
Peak # of filings in 1 hour: 3 pm	8,701
New Case Initiation	80,190
Portal Accounts	422,750
E-service Emails	1,733,293

Record for Average Submissions per Weekday was June 2021 with 88,131

Previous record for the highest volume day was November 30, 2021, at 100,070 submissions**

Record for Peak Filing Hour (3:00 PM) Submissions was June 2021 at 10,171

Record for New Case Initiation was in May 2021 at 123,476

Record for E-service Emails was in June at 2,047,119

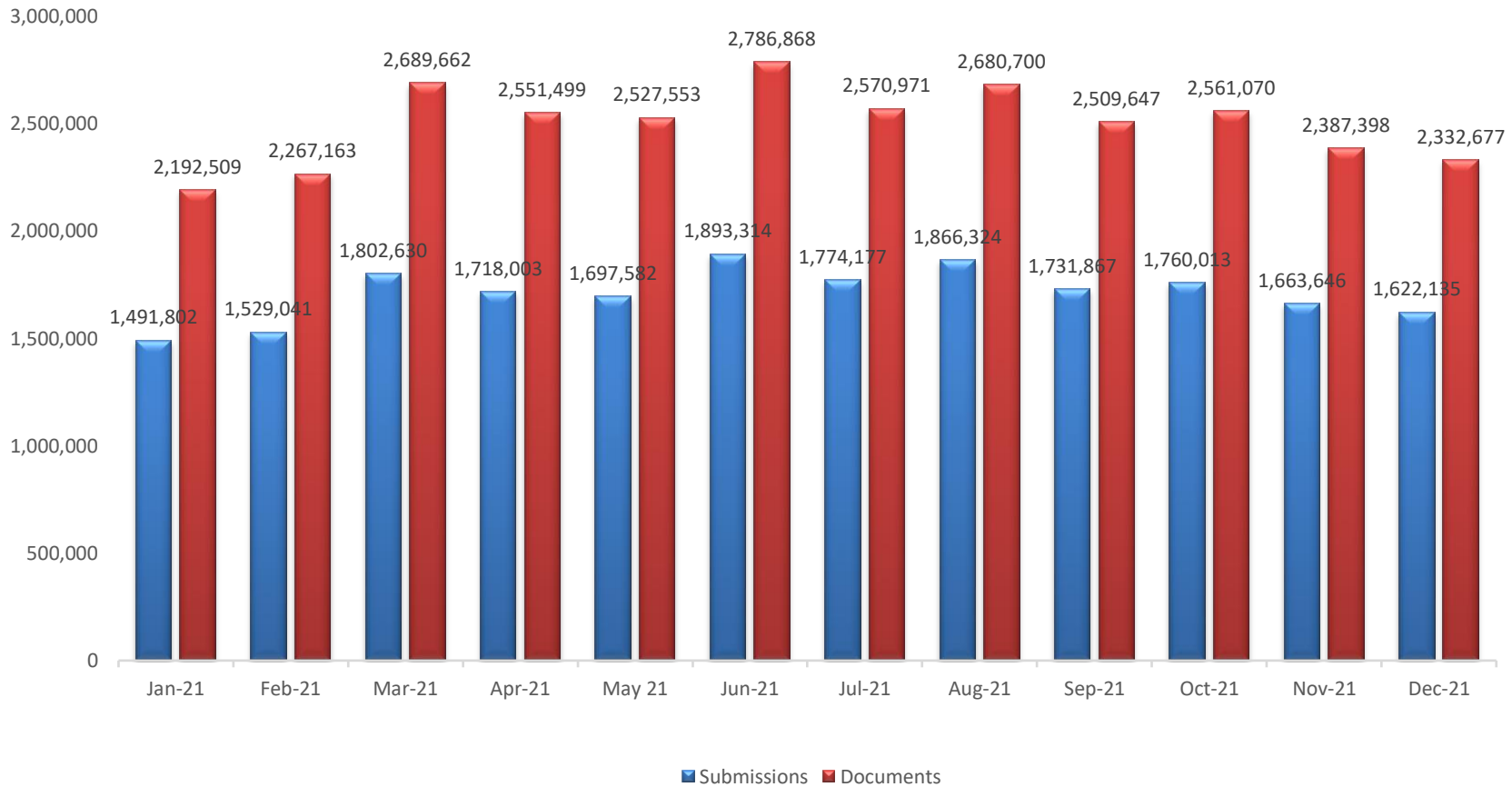


DCA & FSC December Stats

District Courts of Appeal	Submissions	Documents	Pages
1 st District Court of Appeal	2,118	2,730	139,701
2 nd District Court of Appeal	2,362	2,673	175,214
3 rd District Court of Appeal	1,646	2,024	169,290
4 th District Court of Appeal	2,260	2,622	190,973
5 th District Court of Appeal	2,060	2,430	132,651
The Florida Supreme Court	351	468	16,182

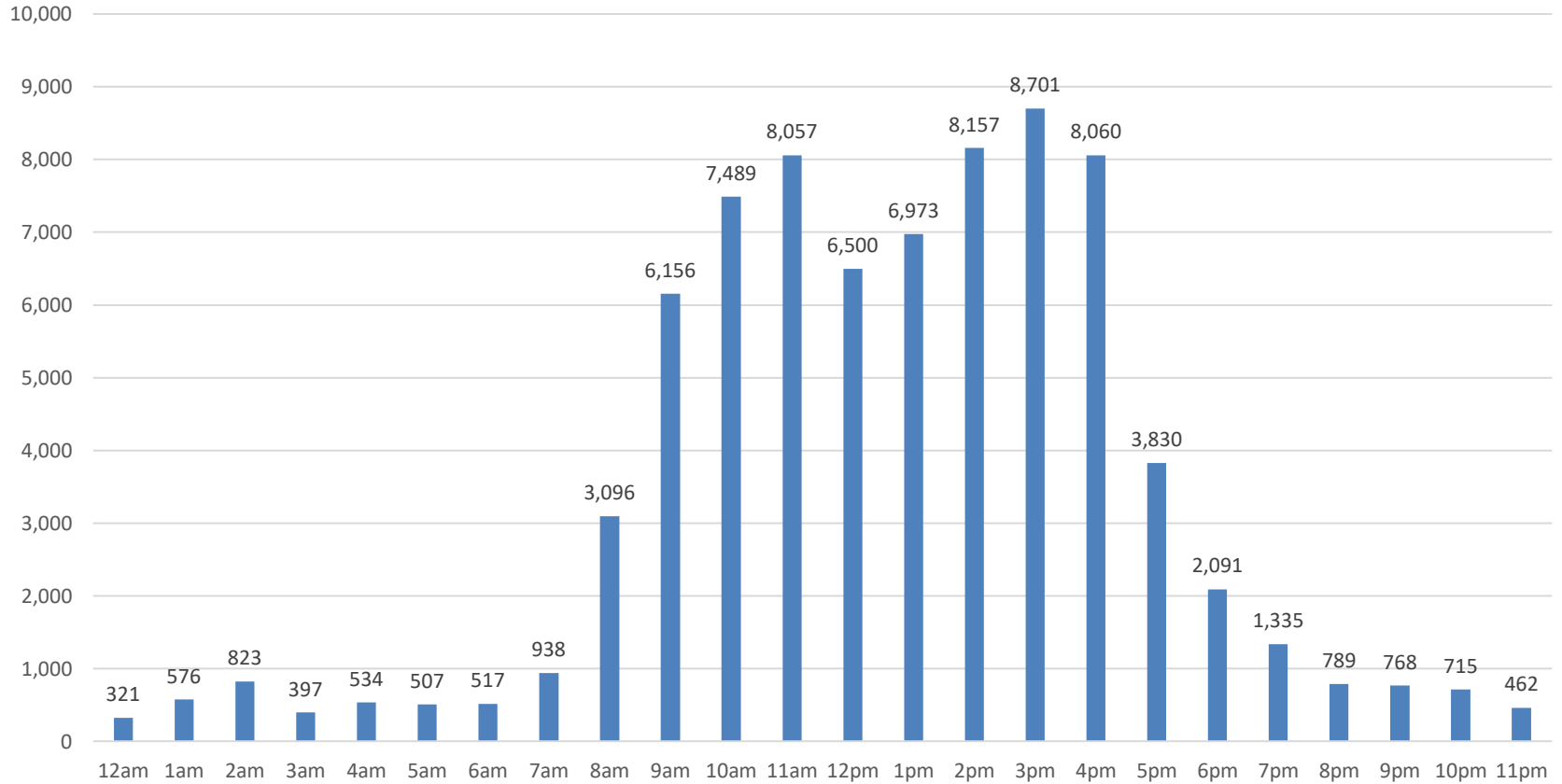


2021 at a Glance



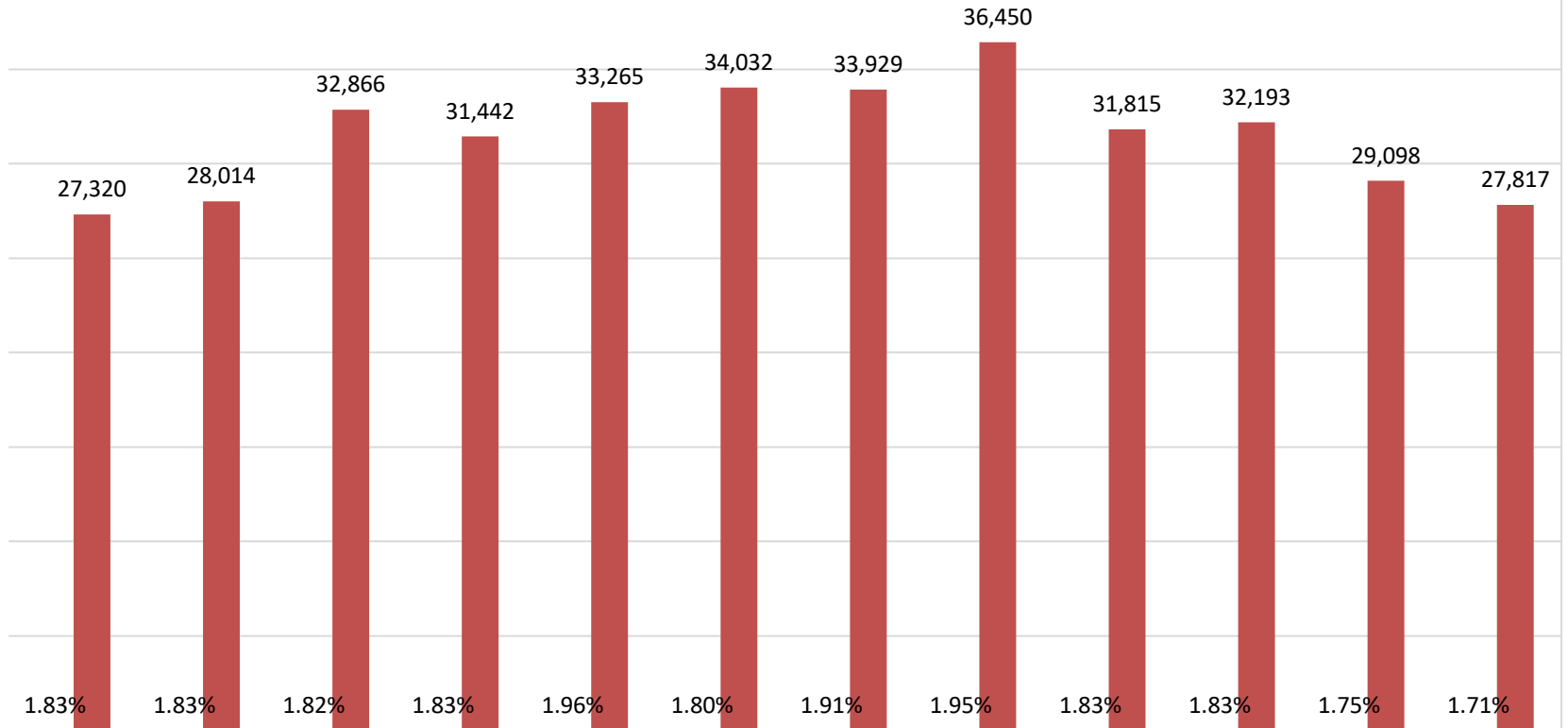


Average # of Filings Per Hour in December





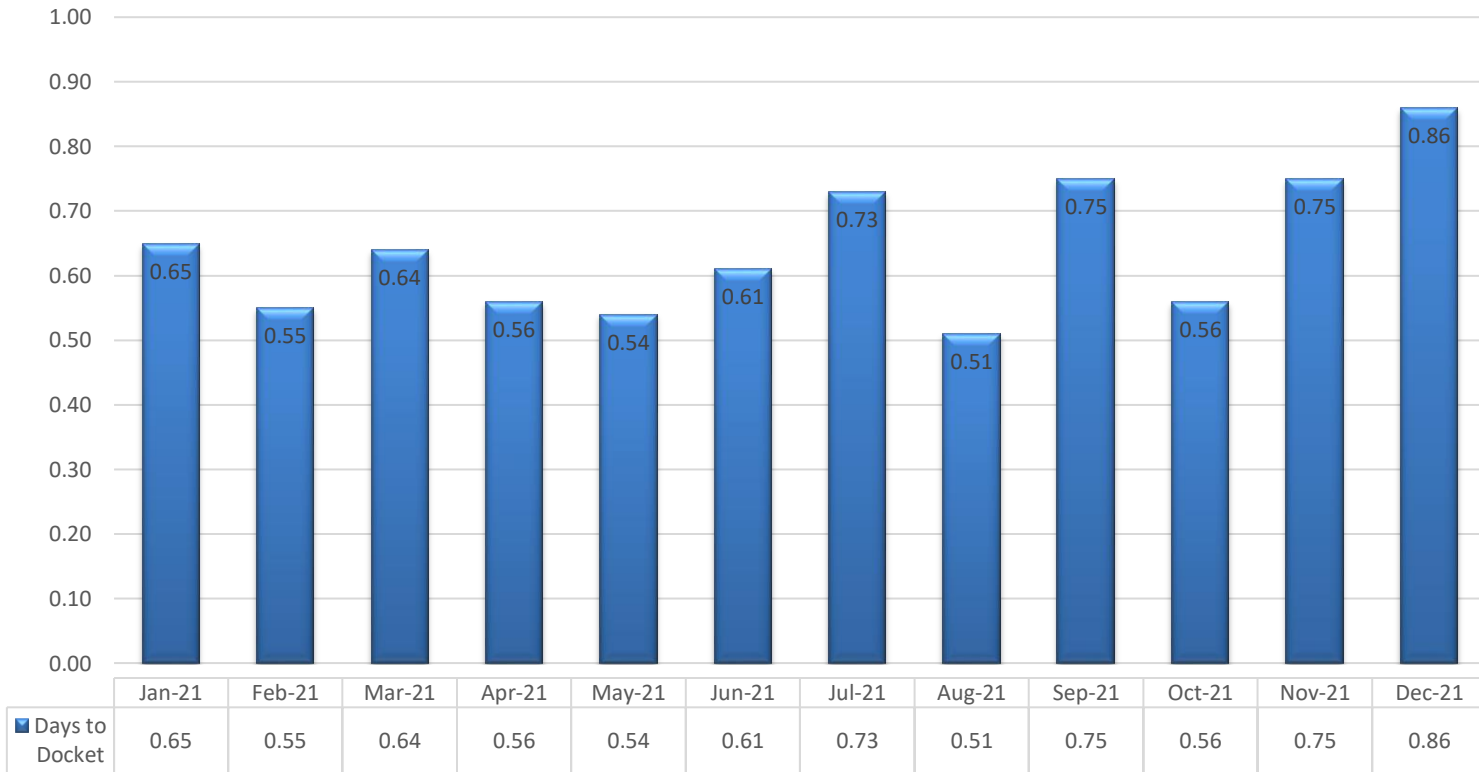
Submissions to Correction Queue in 2021



	Jan-21	Feb-21	Mar-21	Apr-21	May-21	Jun-21	Jul-21	Aug-21	Sep-21	Oct-21	Nov-21	Dec-21
Percentage	1.83%	1.83%	1.82%	1.83%	1.96%	1.80%	1.91%	1.95%	1.83%	1.83%	1.75%	1.71%
Submissions	27,320	28,014	32,866	31,442	33,265	34,032	33,929	36,450	31,815	32,193	29,098	27,817

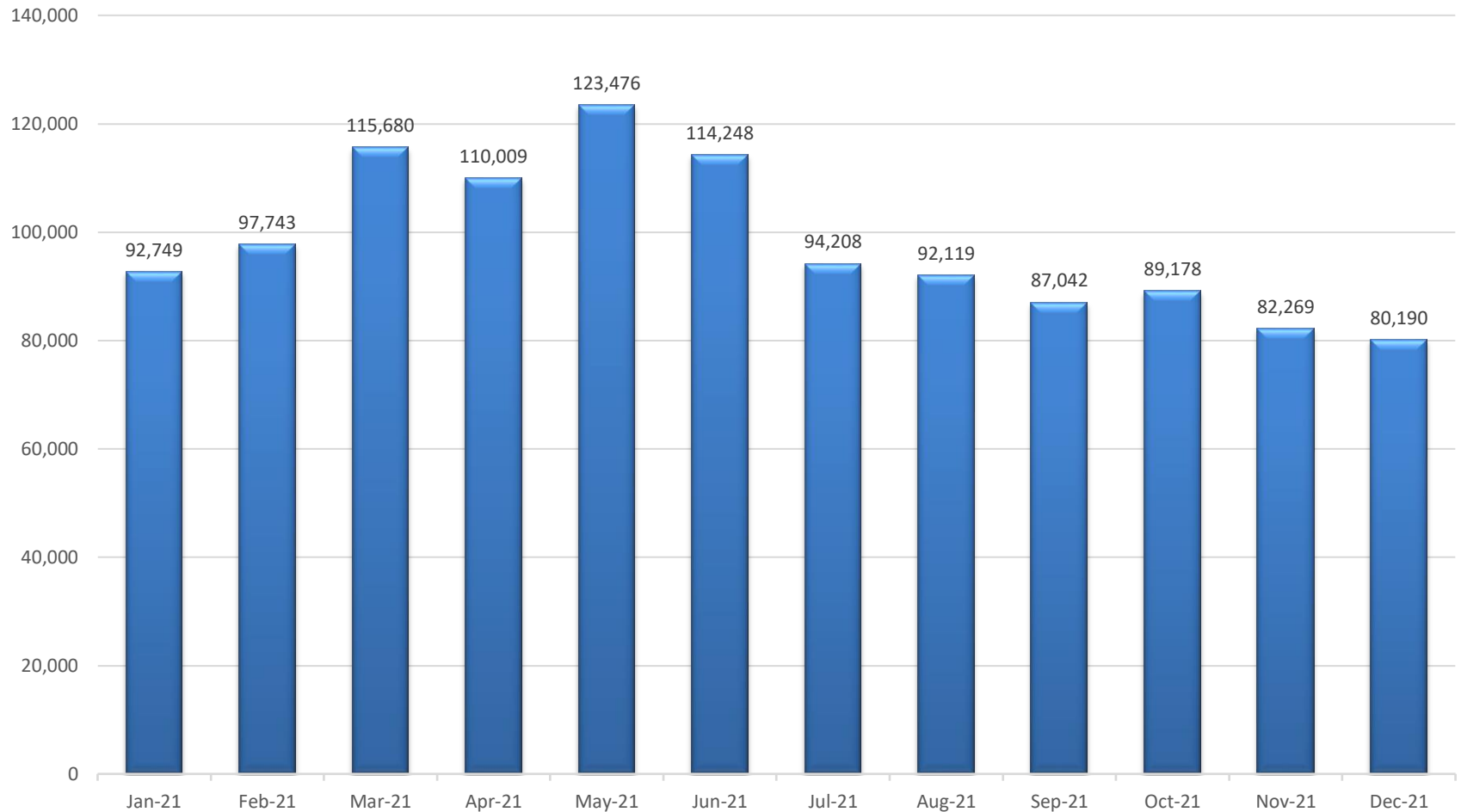


Average Number Days to Docket in 2021





Monthly New Case Totals for 2021





DHSMV Certificates of Completion for December

Detail	Number
Number of Certificates Created and Sent to the Counties	17,149
Number of Certificates sent by County to Correction Queue	1,064
Average Percent of Certificates sent to Correction Queue	6.20%

Department of Revenue Re-direct and Termination Documents

4,928 Re-direct and Termination documents were sent to the Counties by the Portal. The Portal takes the daily DOR data file, creates the appropriate documents, uses the depository number to search CCIS for the correct UCN and then distributes appropriately. These documents are no longer being sent to the Counties in a paper format.



Active Portal Users by Filer Role in December

Filer Role	# of Accounts	# of Submissions	% of Submissions
Attorneys	86,222	1,193,955	73.6%
Judicial Circuit Filers	1,575	316,914	19.5%
Process Servers	2,207	26,453	1.6%
Self-Represented Litigants	298,536	12,759	0.8%
Law Enforcement	2,459	16,049	1.0%
Mediator/Arbitrator	1,576	4,511	0.3%
Mental Health Professional	1,866	7,199	0.4%



Proposed Documents Submitted via Portal in December

Circuit	County	# Submissions
1 st Mentis	Escambia	1,514
	Okaloosa	1,090
	Santa Rosa	1,354
	Walton	420
2 nd ICMS	Leon	318
	Wakulla	111
4 th ICMS	Clay (B'mark)	0
	Duval	859
5 th ICMS	Marion	38
	Sumter	30
8 th ICMS	Alachua	607
	Baker	20

Circuit	County	# Submissions
	Bradford	11
	Gilchrist	4
	Levy	28
	Union	2
10 th ICMS	Highlands	147
	Polk	714
12 th Mentis	Manatee	132
	Sarasota	0
13 th JAWS	Hillsborough	12,822
14 th ICMS	Bay	2,189
	Calhoun	119
	Gulf	97



Proposed Documents via the Portal for December cont.

Circuit	County	# of Submissions
14 th Cont.	Holmes	200
	Jackson	399
	Washington	212
15 th JMS	Palm Beach	791
18 th ICMS	Brevard	1,050
	Seminole	3,310
20 th Mentis	Charlotte	1,068
	Collier*	229
	Lee	6,337

*New this month



Judicial Circuit Viewer Submissions in December

Circuit	Submissions	Documents
1 st	17,964	17,964
2 nd	2,135	2,135
3 rd	280	280
4 th	2,953	2,953
5 th	0	0
6 th	0	0
7 th	1,337	1,337
8 th	5,663	5,663
9 th	9,679	9,679
10 th	3,896	3,896

Circuit	Submissions	Documents
11 th	107,414	120,583
12 th	2,976	2,976
13 th	0	0
14 th	5,805	5,805
15 th	27,509	27,935
16 th	521	521
17 th	32,575	36,360
18 th	9,781	9,781
19 th	2,999	2,999
20 th	25,024	25,024

Submissions from filers associated with a judicial circuit submitted via the system-to-system interface (judicial viewer) to the portal.



Judicial Circuit Single Session Submissions in December

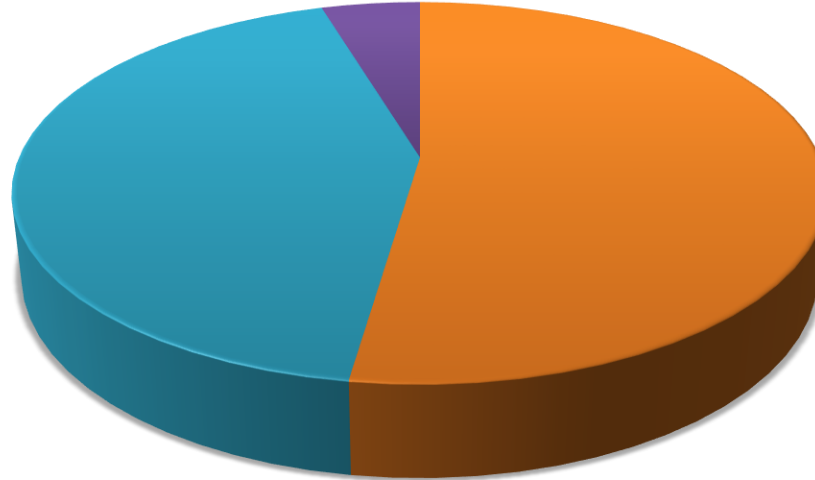
Circuit	Submissions	Documents
1 st	0	0
2 nd	3,624	3,806
3 rd	2,209	2,424
4 th	6,979	7,951
5 th	12,482	14,407
6 th	0	0
7 th	2	2
8 th	0	0
9 th	10,131	10,649
10 th	6,919	8,080

Circuit	Submissions	Documents
11 th	2,098	2,299
12 th	0	0
13 th	0	0
14 th	817	847
15 th	0	0
16 th	0	0
17 th	7	7
18 th	5,007	5,502
19 th	7,212	7,897
20 th	534	561

Submissions from filers associated with a judicial circuit where they log into the portal to submit (single session).



Document Format for December



■ Scanned PDF ■ Text Based PDF ■ Word Doc.

Format	Number	Percent
Word	104,768	4%
Text Based PDF	973,098	42%
Scanned PDF	1,252,229	54%



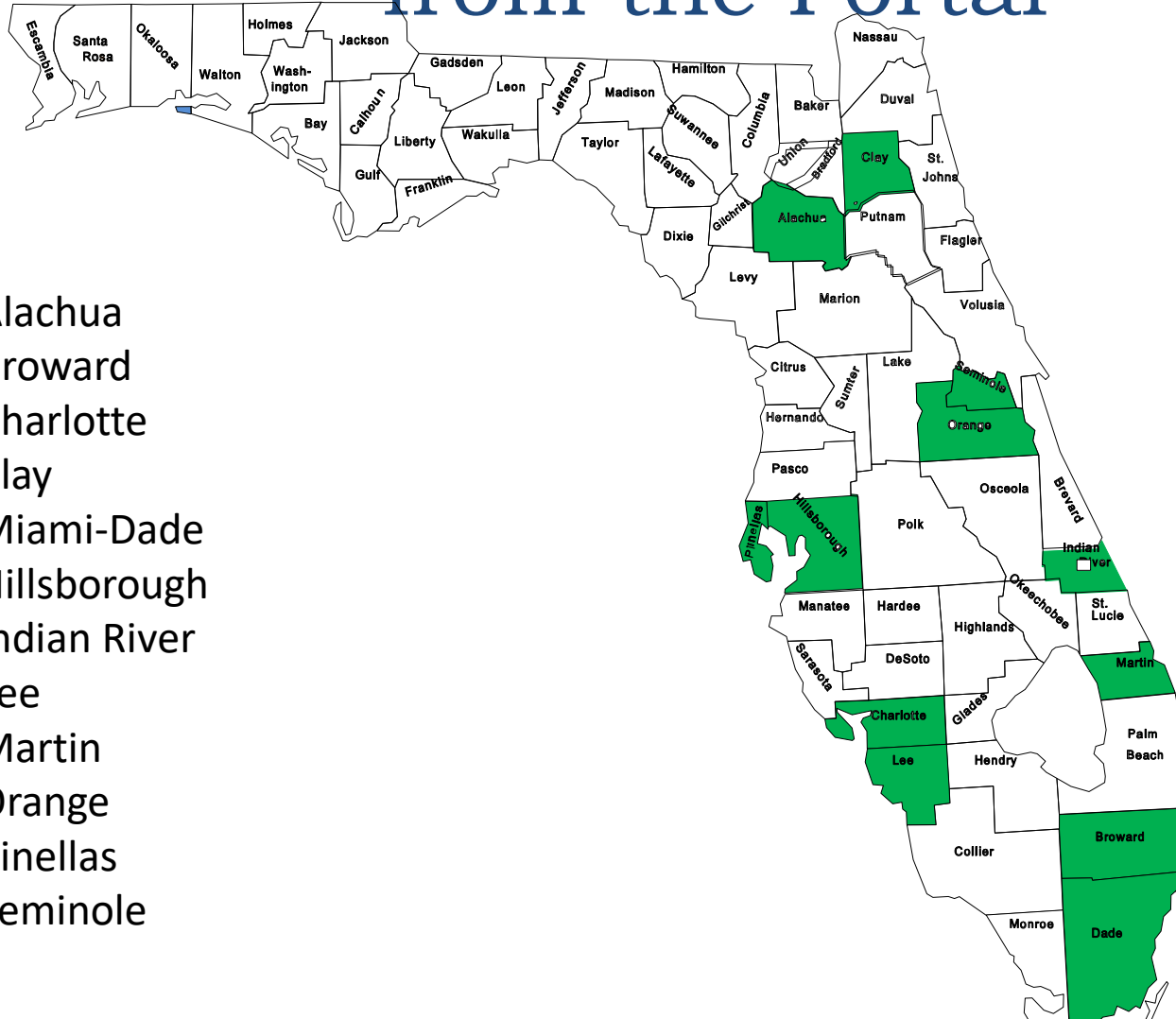
PDF/A Breakdown

Division	# of Docs	PDF	PDF/A	Other	Searchable	Not Searchable
Civil	1,938,926	1,322,303	536,876	79,747	827,652	1,031,527
Criminal	378,882	221,421	132,645	24,816	139,086	214,980

	% PDF	% PDF/A	Other	Searchable	Not Searchable
Civil	68.2%	27.7%	4.1%	42.7%	53.2%
Criminal	58.4%	35.0%	6.5%	36.7%	56.7%



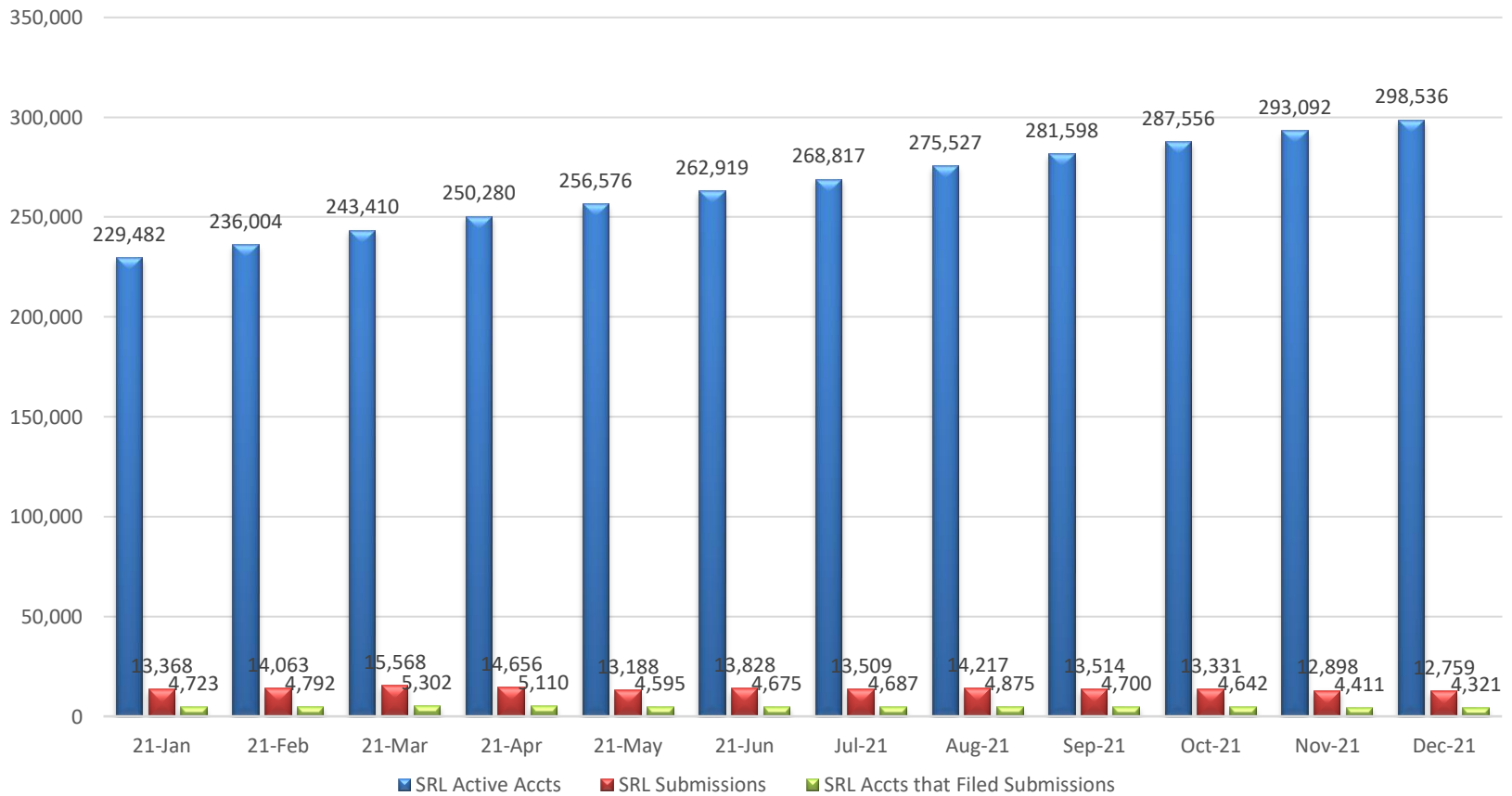
Accepting PDF/A Documents from the Portal



- Alachua
- Broward
- Charlotte
- Clay
- Miami-Dade
- Hillsborough
- Indian River
- Lee
- Martin
- Orange
- Pinellas
- Seminole



Active Self-Represented Litigant Accounts & Submissions for 2021





SRL Account Status for December

Accounts	Status
1,923	Inactive (Requested by Portal User)
1,800	Pending Activation
1,707	Locked (After 4 attempts)
298,536	Active

Organization	Submissions
Counties	12,245
Supreme Court of Florida	41
First District Court of Appeal	109
Second District Court of Appeal	119
Third District Court of Appeal	74
Fourth District Court of Appeal	107
Fifth District Court of Appeal	64



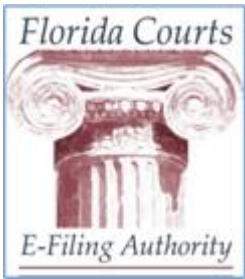
SRL Submissions in December

Jurisdiction	All Submissions	All Documents	New Cases	New Case Docs
Counties	12,759	25,716	1,377	9,204
FSC	41	53	2	4
1 st DCA	109	168	13	22
2 nd DCA	119	137	0	0
3 rd DCA	74	88	10	18
4 th DCA	107	126	5	10
5 th DCA	64	70	1	2



DIY Interviews Used in December

Document	New Case/Sub. Filing	Number
Answer – Small Claims	Subsequent Filing	14
Affidavit of Corroborating Witness	Subsequent Filing	2
Notice of Related Cases	Subsequent Filing	1
Notice of Social Security Number	Subsequent Filing	3
Petition for Dissolution of Marriage with No Dependent or Minor Child(ren)	New Case	1
Pet. for Inj. for Protection Against Dom. Violence	New Case	1
Pet. for Inj. for Protection Against Repeat Violence	New Case	1
Petition for Simplified Dissolution of Marriage	New Case	7
Statement of Claim	New Case	2



DIY Interviews Submitted to County

Interview	County	Number
Affidavit of Corroborating Witness	Duval	2
Answer	Brevard Collier Duval Hillsborough Lee Miami-Dade Orange Osceola Palm Beach Pasco Pinellas Seminole	14
Notice of Related Cases	Palm Beach	1



DIY Interviews Used by County

Interview	County	Number
Notice of Social Security Number	Collier Duval Lee	3
Petition for Dissolution of Marriage with No Dependent or Minor Child(ren) or Property	Polk	1
Petition for Injunction for Protection Against Domestic Violence	Pasco	1
Petition for Injunction for Protection Against Repeat Violence	Polk	1
Petition for Simplified Dissolution of Marriage	Alachua Brevard Leon Palm Beach	7
Statement of Claim	Orange	1



December TPV Submissions

Organization	# Submissions	# Documents	Percent
ABC Legal Services, Inc.	39,311	53,144	27%
eFileMadeEasy	93,961	189,465	64%
JJL Process	377	1,249	0%
Turbo Court	133	893	0%
Ironrock	8,818	8,850	6%
Provana	2,928	6,771	2%
InfoTrack	9	26	0%
Azeel, Inc.	332	1,652	0%